

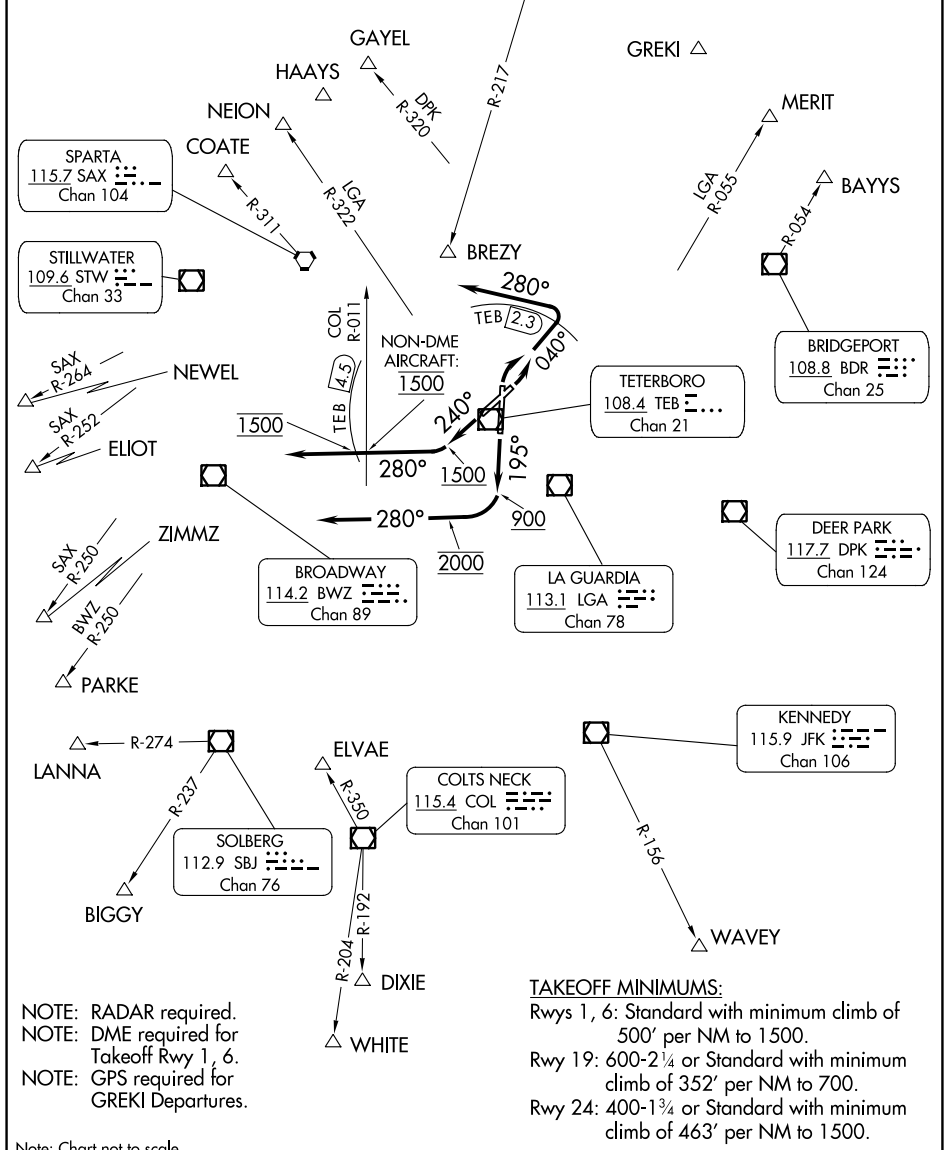
# TETERBORO FOUR DEPARTURE

D-ATIS  
114.2 132.85  
CLNC DEL 128.05  
CPDLC  
GND CON 121.9  
TETERBORO TOWER  
119.5  
NEW YORK DEP CON  
119.2 126.7 379.9

HUGENOT  
116.1 HHO  
Chan 108

**TOP ALTITUDE:  
2000**

KINGSTON  
117.6 IGN  
Chan 123



NE-2, 11 JUL 2024 to 08 AUG 2024

NE-2, 11 JUL 2024 to 08 AUG 2024

NOTE: RADAR required.  
NOTE: DME required for  
Takeoff Rwy 1, 6.  
NOTE: GPS required for  
GREKI Departures.

**TAKEOFF MINIMUMS:**  
Rwys 1, 6: Standard with minimum climb of  
500' per NM to 1500.  
Rwy 19: 600-2¼ or Standard with minimum  
climb of 352' per NM to 700.  
Rwy 24: 400-1¾ or Standard with minimum  
climb of 463' per NM to 1500.

# TETERBORO FOUR DEPARTURE