

WAAS CH 86900 W32A	APP CRS 326°	Rwy Idg TDZE Apt Elev	5058 82 85
--	------------------------	-----------------------------	---------------------------------------

RNAV (GPS) RWY 32

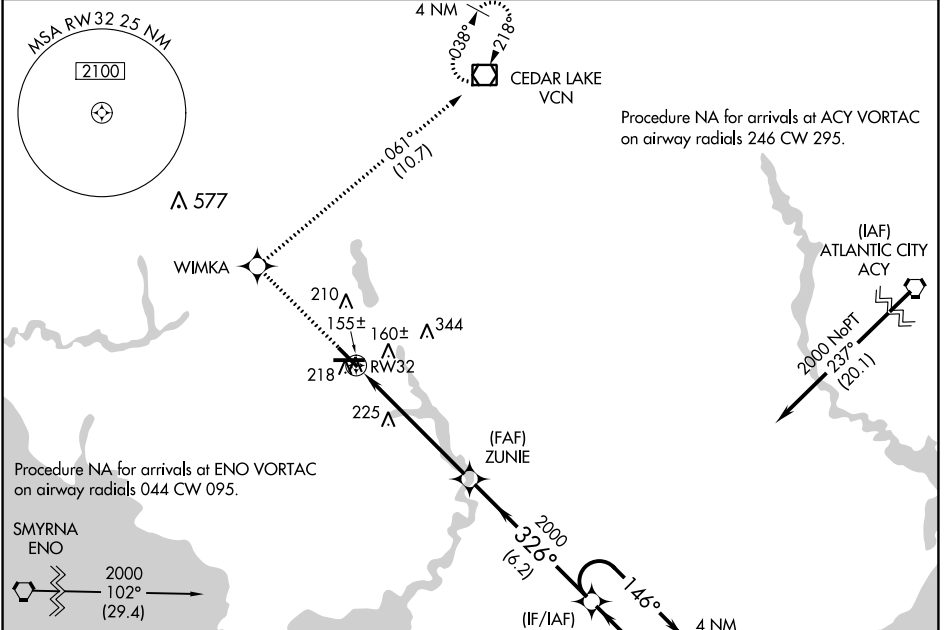
MILLVILLE MUNI (MIV)

RNP APCH-GPS

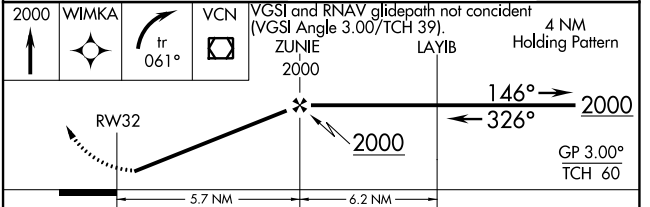
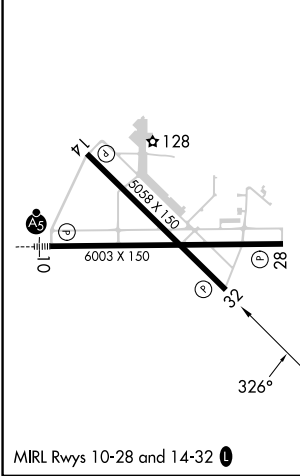
▽ Rwy 32 helicopter visibility reduction below 3/4 SM NA. Baro-VNAV NA when using Atlantic City altimeter setting. For uncompensated Baro-VNAV systems, LNAV/VNAV NA below -1.5°C or above 54°C. When local altimeter setting not received, use Atlantic City altimeter setting:
△ NA increase LPV DA to 441 feet; LNAV/VNAV DA to 475 feet and visibility 1/8 SM; increase all MDAs 60 feet and visibility Cat C and D 1/4 SM.

MISSED APPROACH: Climb to 2000 direct WIMKA and right turn on track 061° to VCN VOR/DME and hold.

ASOS 119.6	ATLANTIC CITY APP CON 124.6 327.125	UNICOM 123.0 (CTAF) 0
----------------------	---	---------------------------------



ELEV 85	TDZE 82
---------	---------



CATEGORY	A	B	C	D
LPV DA		381-1	299 (300-1)	
LNAV/VNAV DA		415-1	333 (400-1)	
LNAV MDA	480-1	398 (400-1)	480-1 1/8	398 (400-1 1/8)
CIRCLING	520-1 435 (500-1)	580-1 495 (500-1)	660-1 1/2 575 (600-1 1/2)	660-2 575 (600-2)

NE-2, 11 JUL 2024 to 08 AUG 2024

NE-2, 11 JUL 2024 to 08 AUG 2024