

VOR/DME OTK <b>114.8</b> Chan <b>95</b>	APP CRS <b>190°</b>	Rwy Idg <b>8002</b> TDZE <b>199</b> Apt Elev <b>203</b>
---	------------------------	---

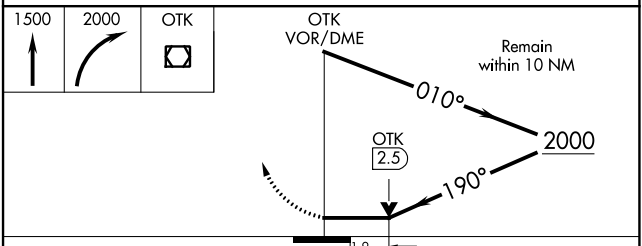
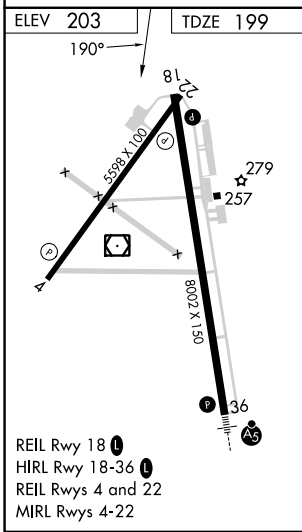
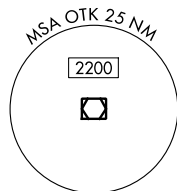
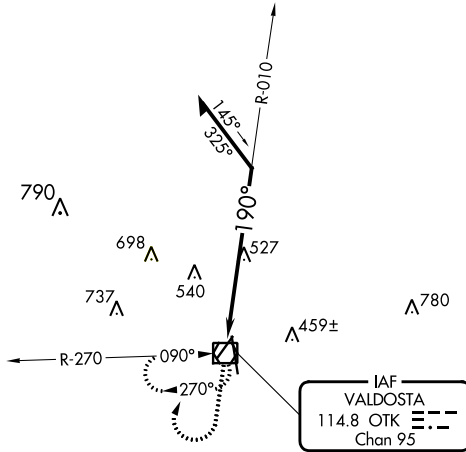
# VOR RWY 18

VALDOSTA RGNL (VLD)

**▽**  
**▲** Rwy 18 helicopter visibility reduction below ¼ SM NA.

MISSED APPROACH: Climb to 1500 then climbing right turn to 2000 direct OTK VOR/DME and hold, continue climb-in-hold to 2000.

ASOS <b>126.225</b>	VALDOSTA APP CON * <b>126.6 285.6</b>	VALDOSTA TOWER * <b>128.35</b> (CTAF) <b>0</b>	GND CON <b>121.7</b>	UNICOM <b>122.95</b>
------------------------	--	---	-------------------------	-------------------------



CATEGORY	A	B	C	D
S-18	840-1 641 (700-1)		840-1 7/8 641 (700-1 7/8)	840-2 641 (700-2)
CIRCLING	840-1 637 (700-1)		900-2 697 (700-2)	1020-2 3/4 817 (900-2 3/4)

SE-4, 11 JUL 2024 to 08 AUG 2024

SE-4, 11 JUL 2024 to 08 AUG 2024