

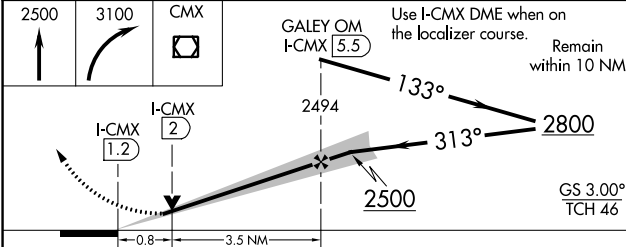
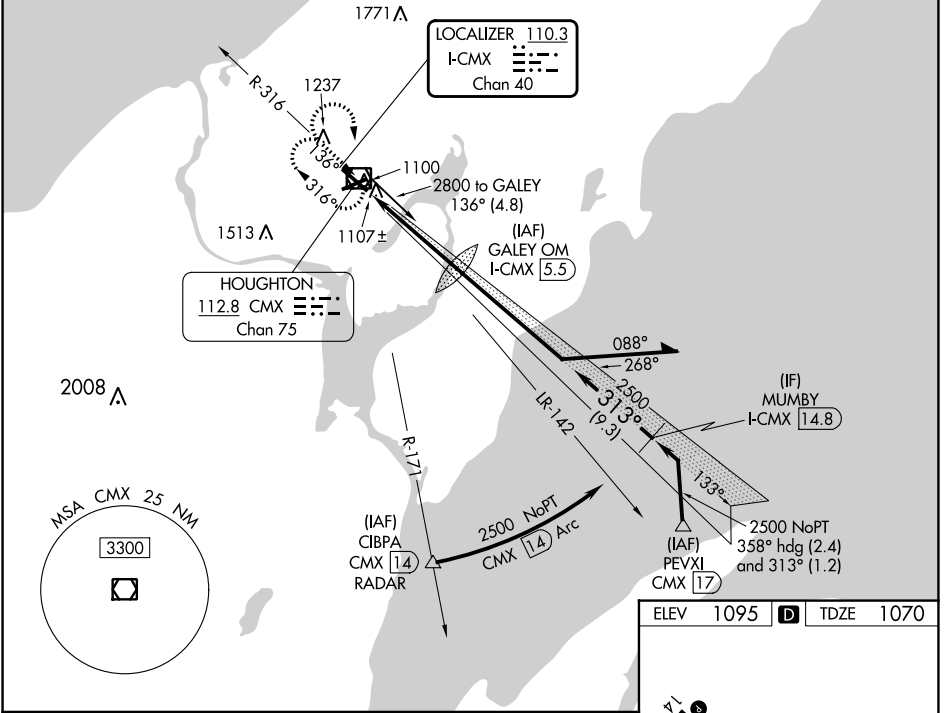
LOC/DME I-CMX 110.3 Chan 40	APP CRS 313°	Rwy ldg TDZE Apt Elev 6501 1070 1095
---	------------------------	--

ILS or LOC RWY 32

HOUGHTON COUNTY MEML (CMX)

DME required for procedure entry.		MALSR 	MISSED APPROACH: Climb to 2500 then climbing right turn to 3100 direct CMX VOR/DME and hold.
	For inop ALS, increase S-LOC 32 Cat C/D visibility to 3/8 SM.		

ASOS 125.675	MINNEAPOLIS CENTER 133.55 379.1	UNICOM 122.7 (CTAF) 0
------------------------	---	---------------------------------



ELEV 1095		TDZE 1070
-----------	--	-----------

MIRL Rwy 7-25	
HIRL Rwy 14-32	
REIL Rwy 7, 14, and 25	

FAF to MAP 4.3 NM

Knots	60	90	120	150	180
Min:Sec	4:18	2:52	2:09	1:43	1:26

CATEGORY	A	B	C	D
S-ILS 32		1270-1/2	200 (200-1/2)	
S-LOC 32		1360-1/2	290 (300-1/2)	
CIRCLING	1620-1 525 (600-1)	1660-1 565 (600-1)	1700-1 3/4 605 (700-1 3/4)	1820-2 1/4 725 (800-2 1/4)

EC-1, 11 JUL 2024 to 08 AUG 2024

EC-1, 11 JUL 2024 to 08 AUG 2024