

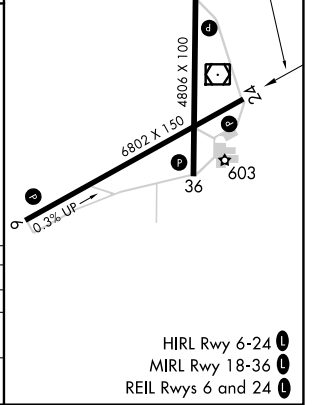
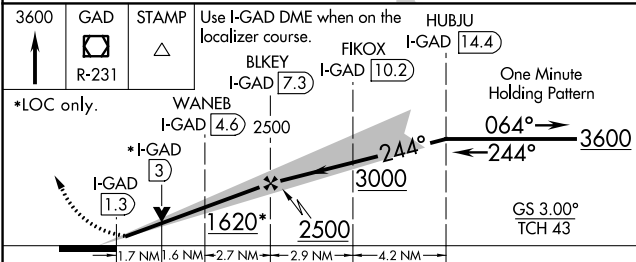
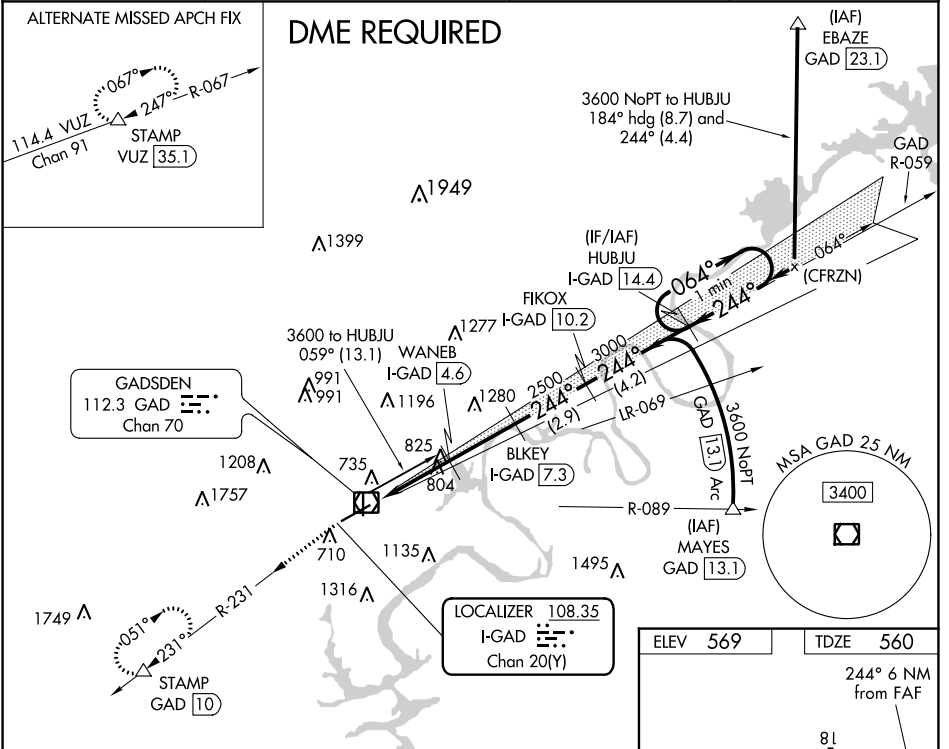
LOC/DME I-GAD 108.35	APP CRS 244°	Rwy Idg 6802
Chan 20(Y)	TDZE 560	Apt Elev 569

ILS or LOC RWY 24
NORTHEAST ALABAMA RGNL (GAD)

▼ DME required. VDP NA when using Annniston altimeter setting. When local altimeter setting not received, use Annniston altimeter setting and increase DA to 845 feet and all visibilities ¼ SM: increase all MDAs 80 feet and visibility S-LOC Cats C and D ¼ SM and Circling Cat C ½ SM.

▲ MISSED APPROACH: Climb to 3600 on GAD VOR/DME R-231 to STAMP/GAD 10 DME and hold, continue climb-in-hold to 3600.

AWOS-3PT 127.825	BIRMINGHAM APP CON 125.45 279.65	CLNC DEL 120.05 257.7	UNICOM 122.8 (CTAF) 0
----------------------------	--	---------------------------------	---------------------------------



CATEGORY	A	B	C	D
S-ILS 24		779-¾	219 (300-¾)	
S-LOC 24	1140-1 580 (600-1)		1140-1¾ 580 (600-1¾)	
CIRCLING	1140-1 571 (600-1)		1440-2½ 871 (900-2½)	1680-3 1111 (1200-3)

SE-4, 11 JUL 2024 to 08 AUG 2024

SE-4, 11 JUL 2024 to 08 AUG 2024