

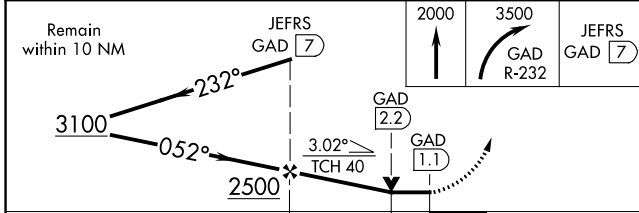
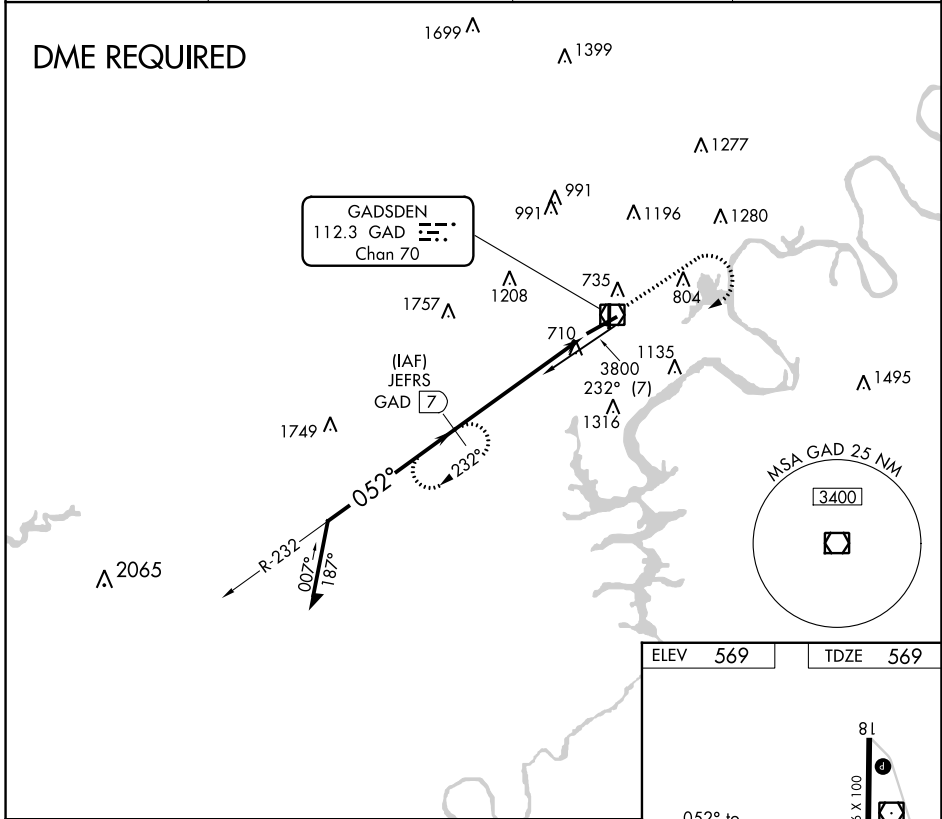
VOR/DME GAD 112.3 Chan 70	APP CRS 052°	Rwy Idg TDZE 569 Apt Elev 569	6802
---	------------------------	---	-------------

VOR RWY 6
NORTHEAST ALABAMA RGNL (GAD)

When local altimeter setting not received, use Anniston altimeter setting and increase all MDAs 80 feet; increase S-6 Cat C/D visibility ¼ mile and Circling Cat C ½ SM. VDP NA when using Anniston altimeter setting. DME required.

MISSED APPROACH: Climb to 2000 then climbing right turn to 3500 on GAD VOR/DME R-232 to JEFRS/7 DME and hold.

AWOS-3PT 127.825	BIRMINGHAM APP CON 125.45 279.65	CLNC DEL 120.05 257.7	UNICOM 122.8 (CTAF)
----------------------------	--	---------------------------------	-------------------------------



ELEV	569	TDZE	569
HIRL Rwy 6-24 MRL Rwy 18-36 REIL Rws 6 and 24			
FAF to MAP 5.9 NM			
Knots	60	90	120 150 180
Min:Sec	5:54	3:56	2:57 2:22 1:58

CATEGORY	A	B	C	D
S-6	960-1 391 (400-1)		960-1½ 391 (400-1½)	
CIRCLING	1100-1 531 (600-1)		1440-2½ 871 (900-2½)	1680-3 1111 (1200-3)

SE-4, 11 JUL 2024 to 08 AUG 2024

SE-4, 11 JUL 2024 to 08 AUG 2024