

(LILLI5.LILLI) 23334

JOHN MURTHA JOHNSTOWN/CAMBRIA COUNTY (JST)  
AL-898 (FAA) JOHNSTOWN, PENNSYLVANIA

# LILLI FIVE DEPARTURE

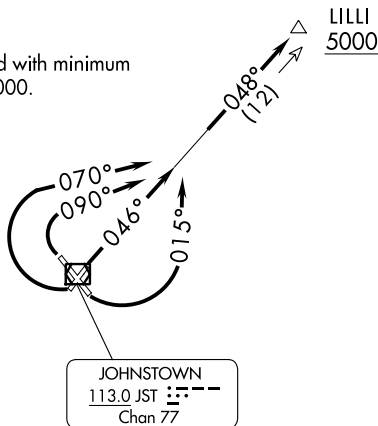
JOHNSTOWN DEP CON ★  
121.2 299.2  
ATIS  
118.325  
CLNC DEL  
126.85 235.775  
GND CON  
121.6  
JOHNSTOWN TOWER ★  
125.75 (CTAF)  
CLEVELAND CENTER  
124.4 327.1

DME and RADAR required.

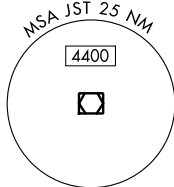
**TOP ALTITUDE:  
ASSIGNED BY ATC**

TAKEOFF MINIMUMS:

Rwy 5, 15, 23, 33: Standard with minimum  
ATC climb of 235'/NM to 5000.



NOTE: During VFR conditions  
watch for opposing traffic  
on JST R-048.



NOTE: Chart not to scale.



## DEPARTURE ROUTE DESCRIPTION

TAKEOFF RUNWAY 5: Climb on heading 046° to intercept JST R-048, thence...  
TAKEOFF RUNWAY 15: Climbing left turn heading 015° to intercept JST R-048, thence...  
TAKEOFF RUNWAY 23: Climbing right turn heading 070° to intercept JST R-048, thence...  
TAKEOFF RUNWAY 33: Climbing right turn heading 090° to intercept JST R-048, thence...  
 ...on JST R-048 to cross LILLI/JST 12 DME at or above 5000 then on (assigned route).

# LILLI FIVE DEPARTURE

(LILLI5.LILLI) 30NOV23

JOHNSTOWN, PENNSYLVANIA  
JOHN MURTHA JOHNSTOWN/CAMBRIA COUNTY (JST)

NE-4, 11 JUL 2024 to 08 AUG 2024

NE-4, 11 JUL 2024 to 08 AUG 2024