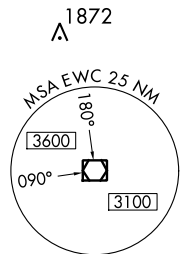
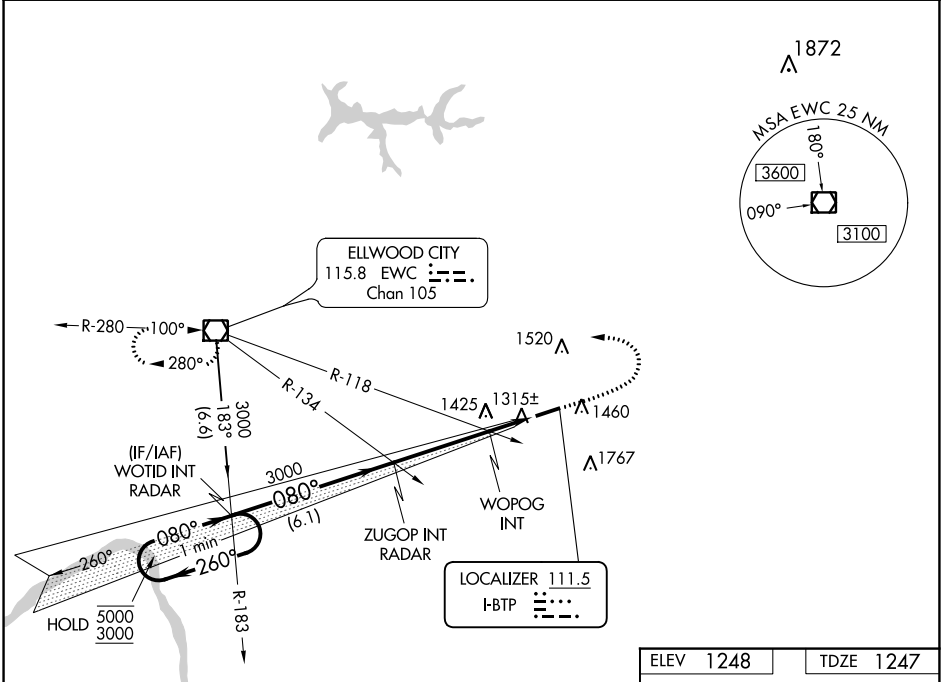


LOC I-BTP 111.5	APP CRS 080°	Rwy Idg 4801
		TDZE 1247
		Apt Elev 1248

ILS or LOC RWY 8

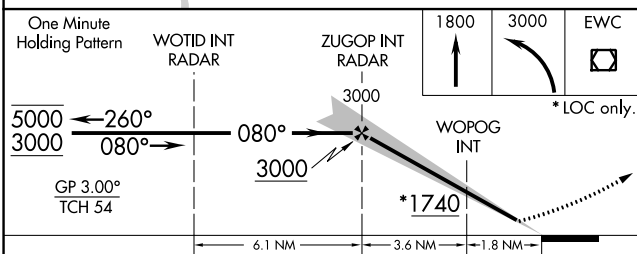
PITTSBURGH/BUTLER RGNL (BTP)

<p>Rwy 8 helicopter visibility reduction below 3/4 SM NA. Circling Rwy 26 NA at night. S-ILS 8 inop table does not apply.</p>	<p>MALSF</p>	<p>MISSED APPROACH: Climb to 1800 then climbing left turn to 3000 direct EWC VOR/DME and hold.</p>	
		AWOS-3PT 121.450	PITTSBURGH APP CON 124.75 338.2



NE-4, 11 JUL 2024 to 08 AUG 2024

NE-4, 11 JUL 2024 to 08 AUG 2024



ELEV 1248	TDZE 1247
<p>080° 5.4 NM from FAF 0.3% UP</p>	
<p>REIL Rwy 26 0 HIRL Rwy 8-26 0</p>	
<p>FAF to MAP 5.4 NM</p>	
Knots	60 90 120 150 180
Min:Sec	5:24 3:36 2:42 2:10 1:48

CATEGORY	A	B	C	D
S-ILS 8	1497-3/4 250 (300-3/4)			
S-LOC 8	1740-3/4	493 (500-3/4)	1740-1 1/8	493 (500-1 1/8)
CIRCLING	1820-1	572 (600-1)	2080-2 1/2 832 (900-2 1/2)	2080-2 3/4 832 (900-2 3/4)
WOPOG FIX MINIMUMS (DUAL VOR RECEIVERS REQUIRED)				
S-LOC 8	1580-3/4 333 (400-3/4)			
CIRCLING	1820-1	572 (600-1)	2080-2 1/2 832 (900-2 1/2)	2080-2 3/4 832 (900-2 3/4)