


LOC I-PBF 111.7	APP CRS 178°	Rwy Idg 5998
		TDZE 206
		Apt Elev 206

ILS or LOC RWY 18

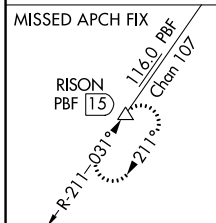
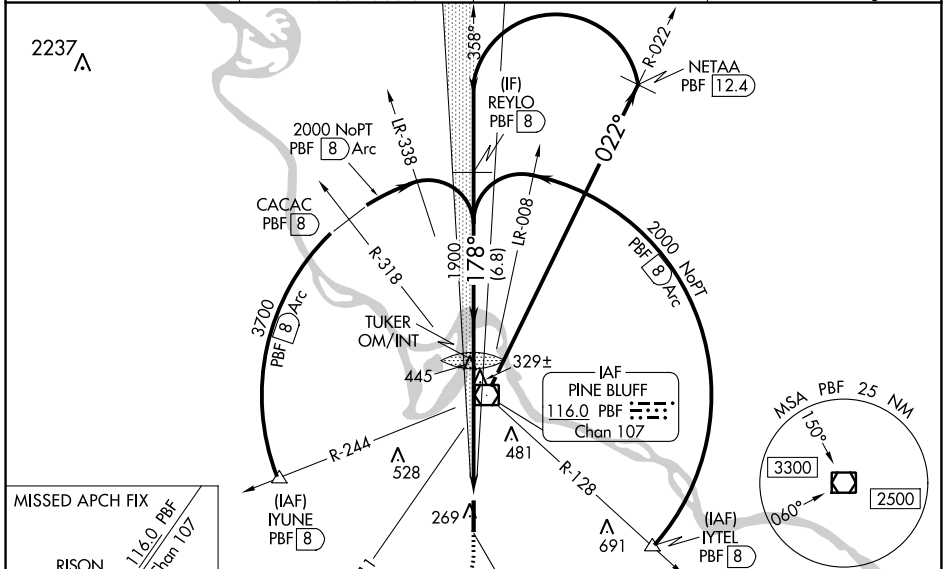
PINEBLUFF RGNL/GRIDER FLD (PBF)

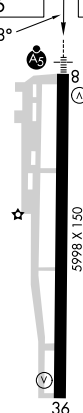
DME required.

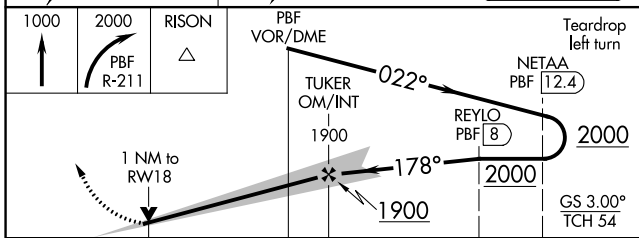
NA Rwy 18 helicopter visibility reduction below 3/4 SM NA. Inop table does not apply to S-ILS 18. For inop ALS, increase S-LOC 18 all Cats visibility to 1 SM. For inop ALS when using Stuttgart altimeter setting, increase S-LOC 18 Cat A/B visibility to 1 SM. DME from PBF VOR/DME. DME requires simultaneous reception of I-PBF and PBF DME. When local altimeter setting not received, use Stuttgart altimeter setting; increase DA to 541 feet and all MDA 80 feet; increase S-LOC 18 Cat C/D visibility 1/2 SM and Circling Cats C/D visibility 1/4 SM. Autopilot coupled approach NA below 900.

MALS R  MISSED APPROACH: Climb to 1000 then climbing right turn to 2000 on PBF VOR/DME R-211 to RISON/ PBF 15 DME and hold.

ASOS 120.775	LITTLE ROCK APP CON 119.85 353.6	CLNC DEL 119.85	UNICOM 123.0 (CTAF)
------------------------	--	---------------------------	-------------------------------



ELEV 206	TDZE 206
178°	
	
MIRL Rwy 18-36	



CATEGORY	A	B	C	D
S-ILS 18		466-3/4	260 (300-3/4)	
S-LOC 18		580-3/4	374 (400-3/4)	
CIRCLING	660-1 454 (500-1)	680-1 474 (500-1)	840-1 3/4 634 (700-1 3/4)	880-2 1/4 674 (700-2 1/4)

FAF to MAP 5.1 NM					
Knots	60	90	120	150	180
Min:Sec	5:06	3:24	2:33	2:02	1:42

SC-1, 11 JUL 2024 to 08 AUG 2024

SC-1, 11 JUL 2024 to 08 AUG 2024