

LOC I-SFM 111.5	APP CRS 075°	Rwy Idg 6389 TDZE 241 Apt Elev 244
---------------------------	------------------------	--

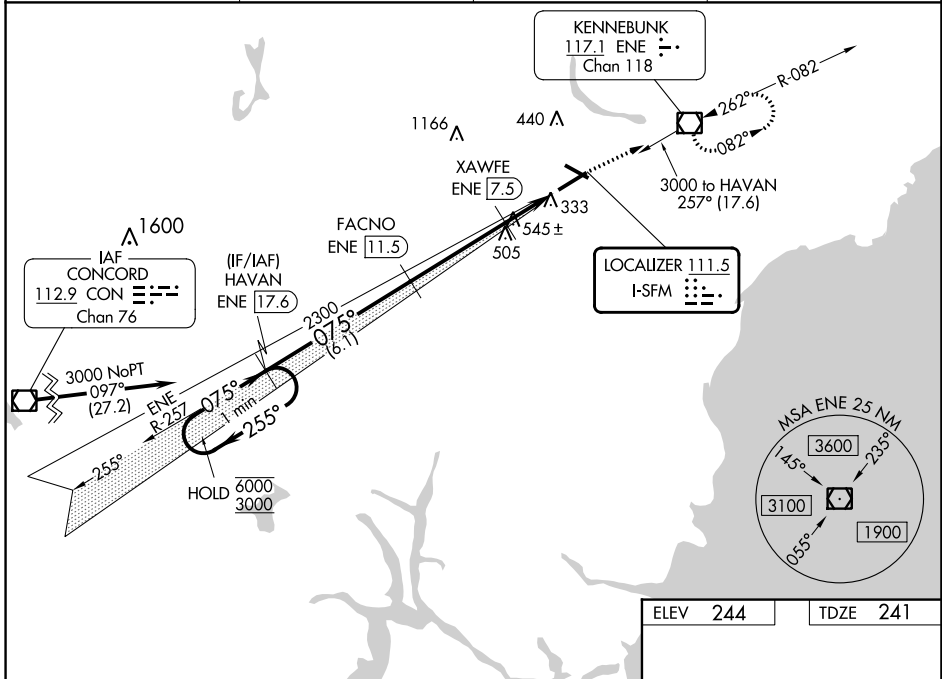
ILS or LOC RWY 7
SANFORD SEACOAST RGNL (SFM)

DME required.

⚠ Rwy 7 helicopter visibility reduction below 3/4 SM NA. VDP NA when using Rochester altimeter setting. DME from ENE VOR/DME. Simultaneous reception of I-SFM and ENE DME required. When local altimeter setting not received, use Rochester altimeter setting: increase S-ILS 7 DA to 479 feet; increase all MDAs 40 feet and S-LOC 7 Cats C/D visibility 1/8 SM and Circling Cat C visibility 1/4 SM.

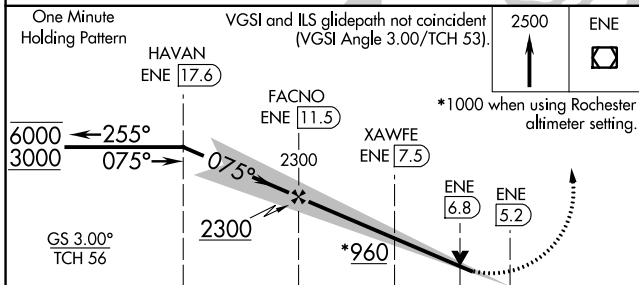
MISSED APPROACH: Climb to 2500 direct ENE VOR/DME and hold, continue climb-in-hold to 2500.

AWOS-3PT 120.025	PORTLAND APP CON ★ 119.75 269.35	CLNC DEL 121.725	UNICOM 123.075 (CTAF) 0
----------------------------	--	----------------------------	-----------------------------------

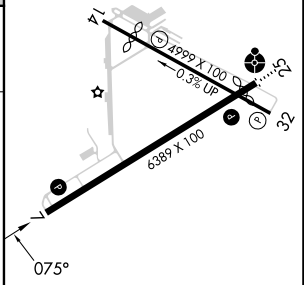


NE-1, 11 JUL 2024 to 08 AUG 2024

NE-1, 11 JUL 2024 to 08 AUG 2024



ELEV 244	TDZE 241
----------	----------



CATEGORY	A	B	C	D
S-ILS 7		441-3/4	200 (200-3/4)	
S-LOC 7	800-1	559 (600-1)	800-1 5/8	559 (600-1 5/8)
C CIRCLING	800-1	556 (600-1)	1180-2 3/4 936 (1000-2 3/4)	1240-3 996 (1000-3)

REIL Rwy 7 0
HIRL Rwy 7-25 0
MIRL Rwy 14-32 0