

WAAS CH 53521 W25A	APP CRS 255°	Rwy Idg TDZE 235 Apt Elev 244
--	------------------------	---

RNAV (GPS) RWY 25

SANFORD SEACOAST RGNL (SFM)

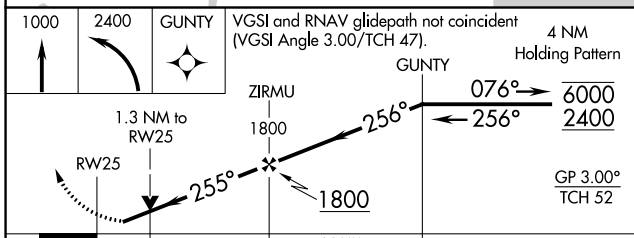
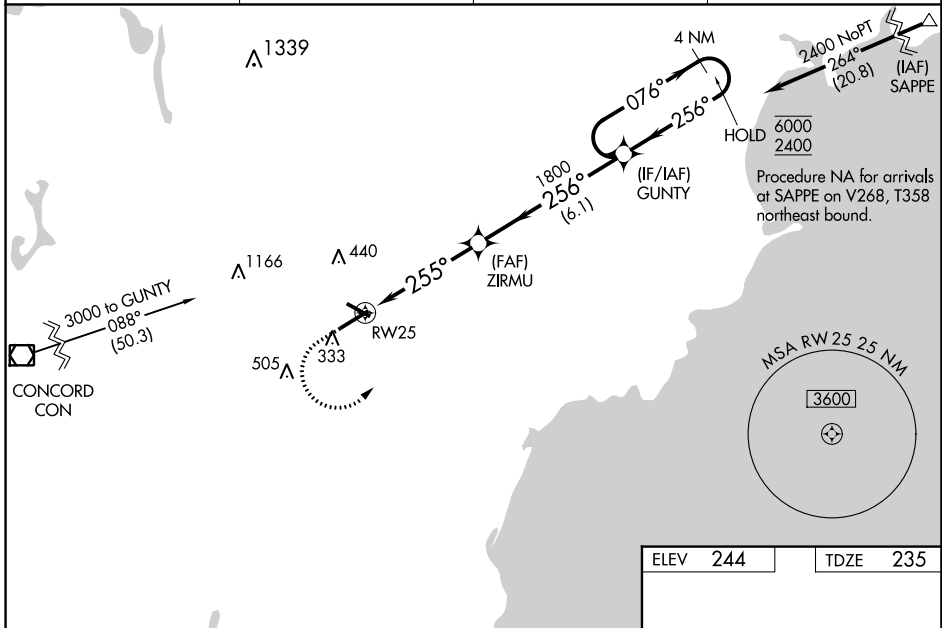
RNP APCH - GPS.

▼ Baro-VNAV and VDP NA when using Rochester altimeter setting. Rwy 25 helicopter visibility reduction below 3/4 SM NA. For uncompensated Baro-VNAV systems, LNAV/VNAV NA below -15°C or above 54°C. Inop table does not apply to LPV or LNAV Cats A and B. For inop ALS, increase LNAV/VNAV all Cats visibility to 1 1/2 and LNAV Cats C/D visibility to 1%. When local altimeter setting not received, use Rochester altimeter setting: increase LPV DA to 534; increase LNAV/VNAV DA to 713 and visibility all Cats 1/2 SM; increase all MDAs 40 feet and LNAV Cats C/D visibility 1/2 SM and Circling Cat C visibility 1/4 SM. For inop ALS, increase LNAV/VNAV all Cats visibility to 1% and LNAV Cats C/D visibility to 1%.

ODALS

MISSED APPROACH: Climb to 1000 then climbing left turn to 2400 direct GUNTY and hold.

AWOS-3PT 120.025	PORTLAND APP CON ★ 119.75 269.35	CINC DEL 121.725	UNICOM 123.075 (CTAF) 0
----------------------------	--	----------------------------	-----------------------------------



ELEV 244	TDZE 235
-----------------	-----------------

REIL Rwy 7 0
HIRL Rwy 7-25 0
MRL Rwy 14-32 0

CATEGORY	A	B	C	D
LPV DA		496-3/4	261 (300-3/4)	
LNAV/VNAV DA		675-1 1/8	440 (500-1 1/8)	
LNAV MDA	680-3/4	445 (500-3/4)	680-1 1/8	445 (500-1 1/8)
CIRCLING	760-1	516 (600-1)	1180-2 3/4 936 (1000-2 3/4)	1240-3 996 (1000-3)

NE-1, 11 JUL 2024 to 08 AUG 2024

NE-1, 11 JUL 2024 to 08 AUG 2024