

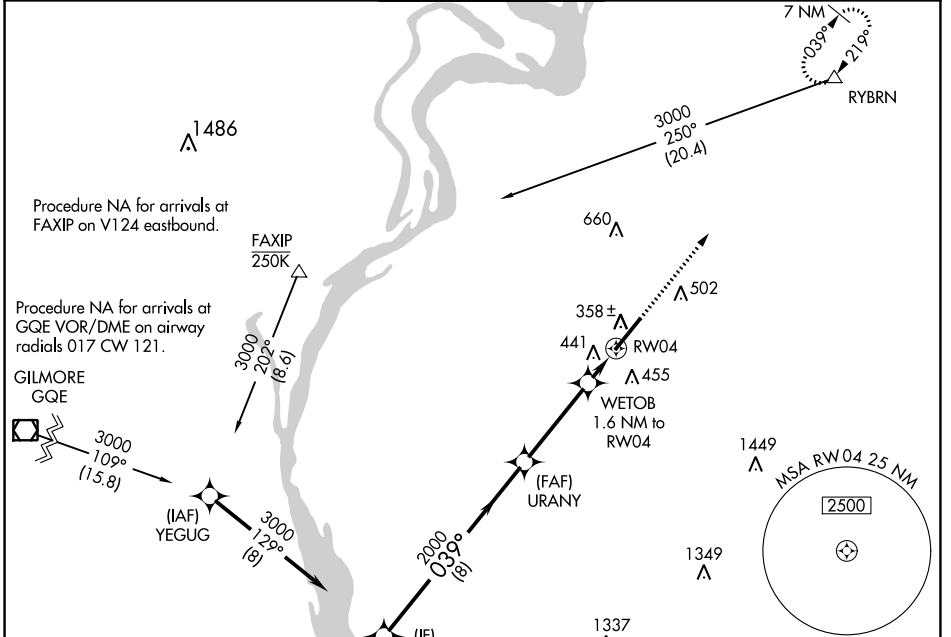
WAAS CH <b>78334</b> <b>W04A</b>	APP CRS <b>039°</b>	Rwy Idg TDZE <b>292</b> Apt Elev <b>319</b>	<b>8001</b>
--	------------------------	---	-------------

# RNAV (GPS) RWY 4

MILLINGTON/MEMPHIS (NQA)

RNP APCH	<p>▼ Rwy 4 helicopter visibility reduction below ¾ SM NA. For uncompensated Baro-VNAV systems, LNAV/VNAV NA below -15°C or above 54°C.</p> <p>▲ MISSED APPROACH: Climb to 3000 direct RYBRN and hold.</p>
----------	---

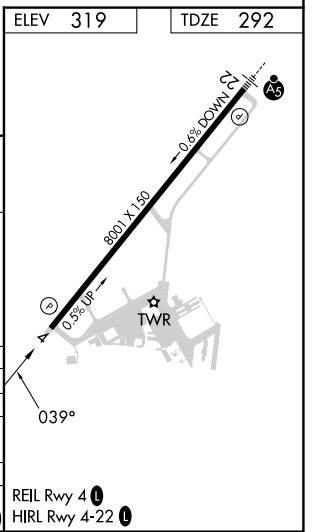
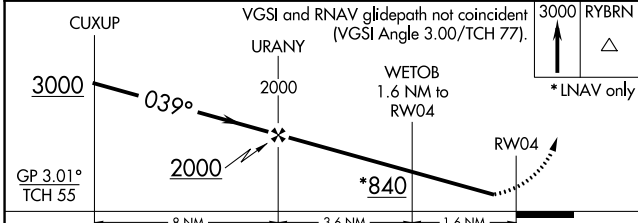
AWOS-3 <b>118.925</b>	MEMPHIS APP CON <b>119.1 291.6</b> <b>125.8 338.3</b> (176°-355°) (356°-175°)	MILLINGTON TOWER ★ <b>120.25</b> (CTAF) <b>0 340.2</b>	GND CON <b>121.375</b>	UNICOM <b>122.95</b>
--------------------------	--	---	---------------------------	-------------------------



SE-1, 11 JUL 2024 to 08 AUG 2024

SE-1, 11 JUL 2024 to 08 AUG 2024

ELEV 319	TDZE 292
----------	----------



CATEGORY	A	B	C	D	E
LPV DA	492-¾		200 (200-¾)		
LNAV/VNAV DA	746-1½		454 (500-1½)		
LNAV MDA	700-1	408 (400-1)	700-1¼	408 (400-1¼)	
CIRCLING	800-1	820-1	920-1¾	960-2¼	960-2½
	481 (500-1)	501 (600-1)	601 (700-1¾)	641 (700-2¼)	641 (700-2½)

REIL Rwy 4

HIRL Rwy 4-22