

WAAS CH 99417 W17A	APP CRS 173°	Rwy Idg TDZE 1553 Apt Elev 1563
--	------------------------	---

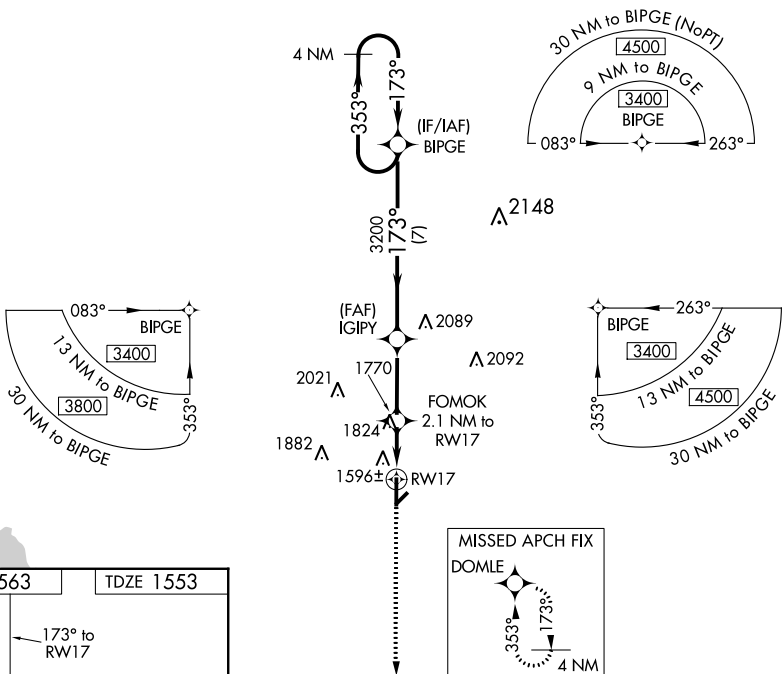
RNAV (GPS) RWY 17

HOBART RGNL (HBR)

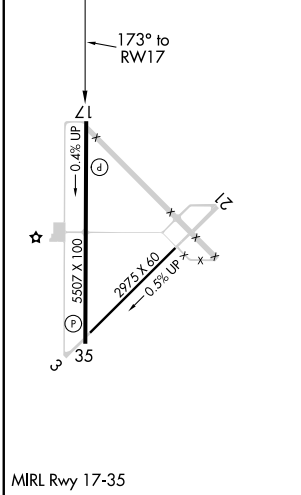
⚠ For uncompensated Baro-VNAV systems, LNAV/VNAV NA below -18°C (0°F) or above 45°C (113°F). DME/DME RNP-0.3 NA. When local altimeter setting not received, use Altus/Quartz Mountain Rgnl altimeter setting and increase all DA 71 feet and all MDA 80 feet, increase LPV and LNAV/VNAV all Cats, LNAV Cats C and D and Circling Cat C visibility ¼ mile. Baro-VNAV NA when using Altus/Quartz Mountain altimeter setting. VDP NA with Altus/Quartz Mountain altimeter setting.

MISSED APPROACH: Climb to 4000 direct DOMLE and hold.

ASOS 133.325	ALTUS APP CON * 125.1 353.7	UNICOM 122.8 (CTAF)
------------------------	---------------------------------------	-------------------------------



ELEV 1563	TDZE 1553
------------------	------------------



4000	DOMLE	4 NM Holding Pattern		
*LNAV only.	FOMOK 2.1 NM to RW17	IGIPY 3200		
RW17	1.6 NM to RW17	BIPGE 3200		
1.6	0.5	2.9 NM		
173°	3200	353°		
3400	7 NM	GP 3.00° TCH 35		
CATEGORY	A	B	C	D
LPV DA	1803-1 250 (300-1)			
LNAV/VNAV DA	1900-1¼ 347 (400-1¼)			
LNAV MDA	2080-1	527 (600-1)	2080-1½	2080-1¾
CIRCLING	2080-1	517 (600-1)	2320-2¼	2460-3
			757 (800-2¼)	897 (900-3)