

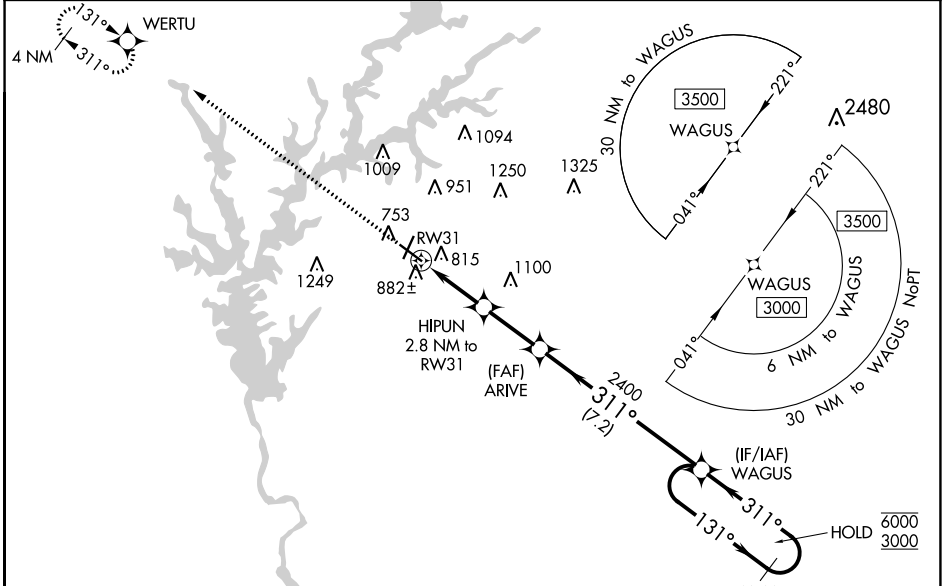
WAAS CH <b>82616</b> <b>W31A</b>	APP CRS <b>311°</b>	Rwy Idg TDZE Apt Elev	<b>6499</b> <b>681</b> <b>694</b>
--	------------------------	-----------------------------	---

# RNAV (GPS) RWY 31

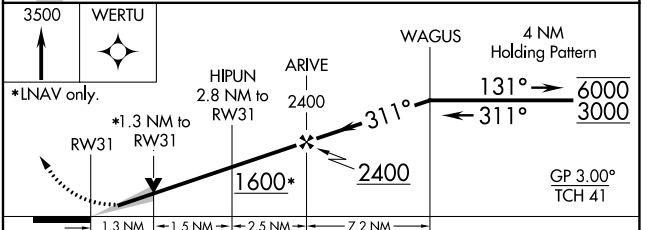
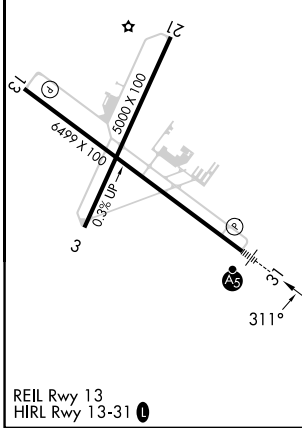
LAGRANGE/CALLAWAY (LGC)

RNP APCH.	MALSR	MISSED APPROACH: Climb to 3500 direct WERTU and hold.
<p>Circling Rwy 13, 21 NA at night. For uncompensated Baro-VNAV systems, LNAV/VNAV NA below -16°C or above 54°C.</p>		

AWOS-3 <b>126.325</b>	ATLANTA APP CON* <b>125.5 323.1</b>	CLNC DEL <b>119.25</b>	UNICOM <b>122.975</b> (CTAF)
--------------------------	--	---------------------------	---------------------------------



ELEV 694	TDZE 681
----------	----------



CATEGORY	A	B	C	D
LPV DA	881-1/2		200 (200-1/2)	
LNAV/VNAV DA	1112-3/4		431 (500-3/4)	
LNAV MDA	1140-1/2	459 (500-1/2)	1140-7/8	459 (500-7/8)
CIRCLING	1280-1	586 (600-1)	1540-2 1/2	1600-3
			846 (900-2 1/2)	906 (1000-3)

SE-4, 11 JUL 2024 to 08 AUG 2024

SE-4, 11 JUL 2024 to 08 AUG 2024