

WAAS CH 63209 W27A	APP CRS 275°	Rwy Idg 11002 TDZE 45 Apt Elev 55
--	------------------------	--

RNAV (GPS) RWY 27R

ORLANDO SANFORD INTL (SF'B)

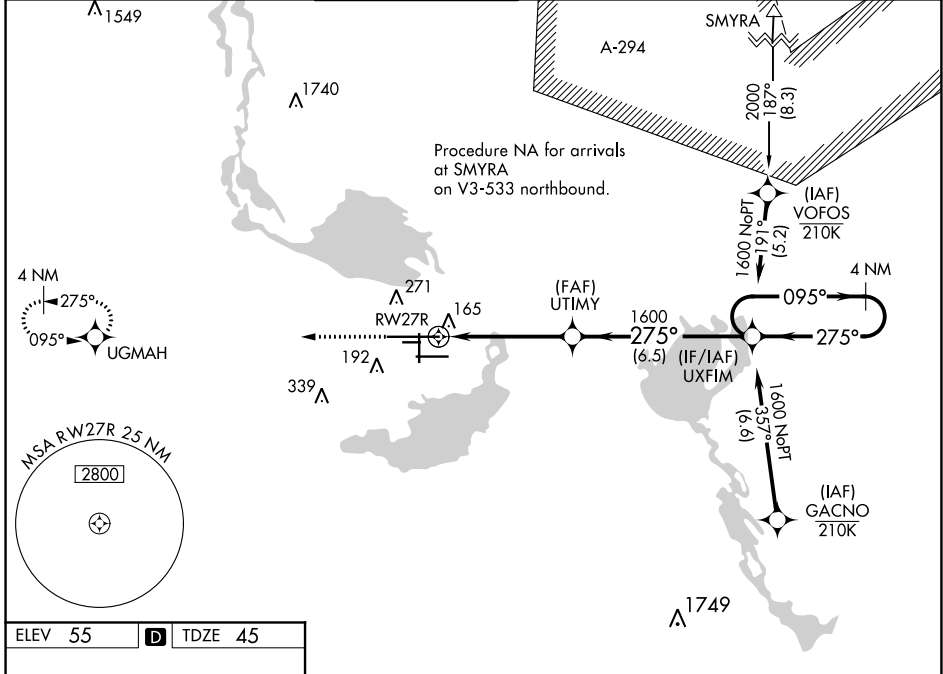
▼ For uncompensated Baro-VNAV systems, LNAV/VNAV NA below 0°C (32°F) or above 54°C (130°F). DME/DME RNP-0.3 NA.
For inop ALS, increase LNAV/VNAV all Cats visibility to 1 1/4 SM, increase LNAV Cat C/D visibility to 1 SM.

MALSR

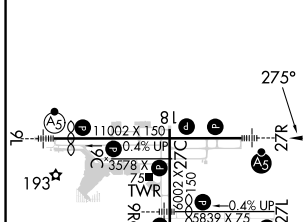


MISSED APPROACH:
Climb to 2000 direct
UGMAH and hold.

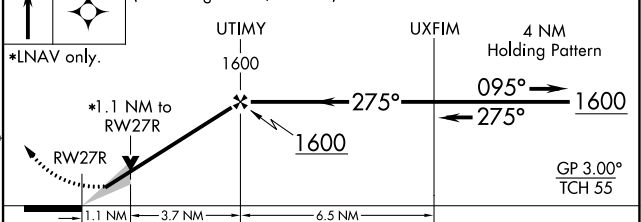
ATIS 125.975	ORLANDO APP CON 135.3 351.9 (NORTH) 119.775 351.9 (SOUTH)	SANFORD TOWER★ 120.3 (CTAF) 0 254.35	GND CON 121.35 254.35	CLNC DEL 123.975	CLNC DEL 121.35 (when twr dosed)
------------------------	---	---	---------------------------------	----------------------------	---



ELEV 55	D	TDZE 45
---------	----------	---------



2000 UGMAH VGSI and RNAV glidepath not coincident (VGSI Angle 3.00/TCH 72).



CATEGORY	A	B	C	D
LPV DA	245-1/2		200 (200-1/2)	
LNAV/VNAV DA	425-7/8		380 (400-7/8)	
LNAV MDA	420-1/2	375 (400-1/2)	420-5/8	375 (400-5/8)
C CIRCLING	580-1	525 (600-1)	600-1 1/2 545 (600-1 1/2)	640-2 585 (600-2)

MIRL Rwy 9C-27C and 18-36 **L**
HIRL Rwy 9L-27R and 9R-27L **L**
REIL Rws 9C, 18, 27L and 36

SE-3, 11 JUL 2024 to 08 AUG 2024

SE-3, 11 JUL 2024 to 08 AUG 2024