

VORTAC DBQ 115.8 Chan 105	APP CRS 138°	Rwy Idg 6502 TDZE 1077 Apt Elev 1077
--	------------------------	---

VOR RWY 13

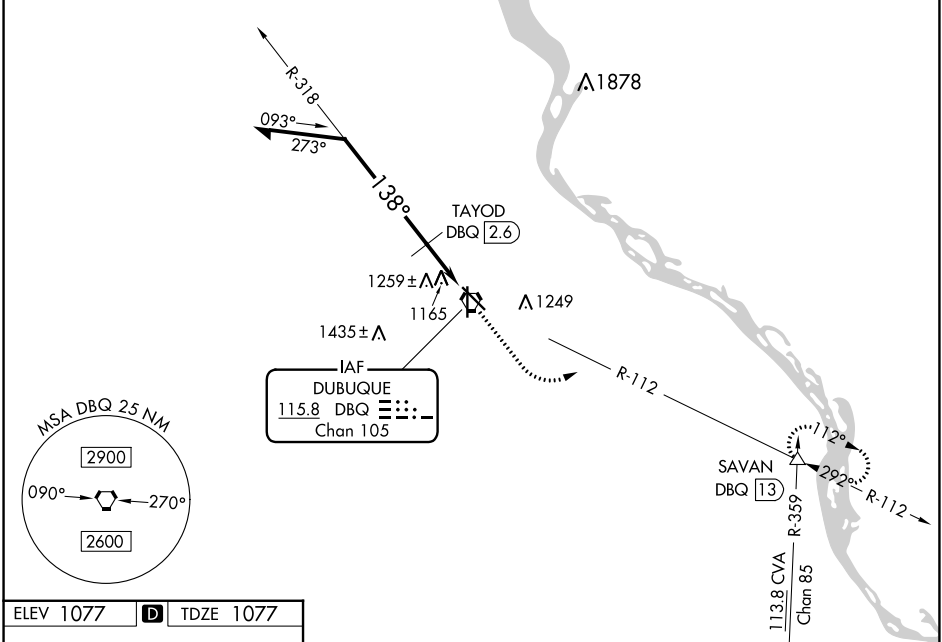
DUBUQUE RGNL (DBQ)

⚠ Inop table does not apply to Cat C. If local altimeter setting not received, use Monticello altimeter setting and increase all MDAs 100 feet. VDP NA when using Monticello altimeter setting.

MALS

MISSED APPROACH: Climb to 2500 then climbing left turn to 3300 via DBQ VORTAC R-112 to SAVAN INT/13 DME and hold.

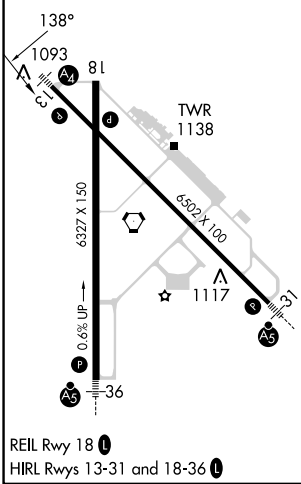
ATIS 127.25	CHICAGO CENTER 133.95 281.4	DUBUQUE TOWER * 119.5 (CTAF) 0 254.4	GND CON 121.8	UNICOM 122.95
-----------------------	---------------------------------------	--	-------------------------	-------------------------



NC-3, 11 JUL 2024 to 08 AUG 2024

NC-3, 11 JUL 2024 to 08 AUG 2024

ELEV 1077	D	TDZE 1077
-----------	----------	-----------



VGSI and descent angles not coincident (VGSI Angle 3.00/TCH 44).

Remain within 10 NM

2800 - 138° - TAYOD DBQ (2.6) - 318° - DBQ VORTAC - 1780 - 3.03° TCH 50 - 0.8 NM - 1.3 NM - 0.6 NM

2500 - 3300 - SAVAN

*1880 when using Monticello altimeter setting.

CATEGORY	A	B	C	D
S-13	1780-3/4	703 (800-3/4)	1780-2	1780-2 1/4
C CIRCLING	1780-1	703 (800-1)	1780-2	1800-2 1/4
TAYOD FIX MINIMUMS				
S-13	1520-3/4	443 (500-3/4)	1520-1 1/4	1520-1 1/2
C CIRCLING	1580-1	503 (600-1)	1600-1 1/2	1800-2 1/4
			523 (600-1 1/2)	723 (800-2 1/4)