

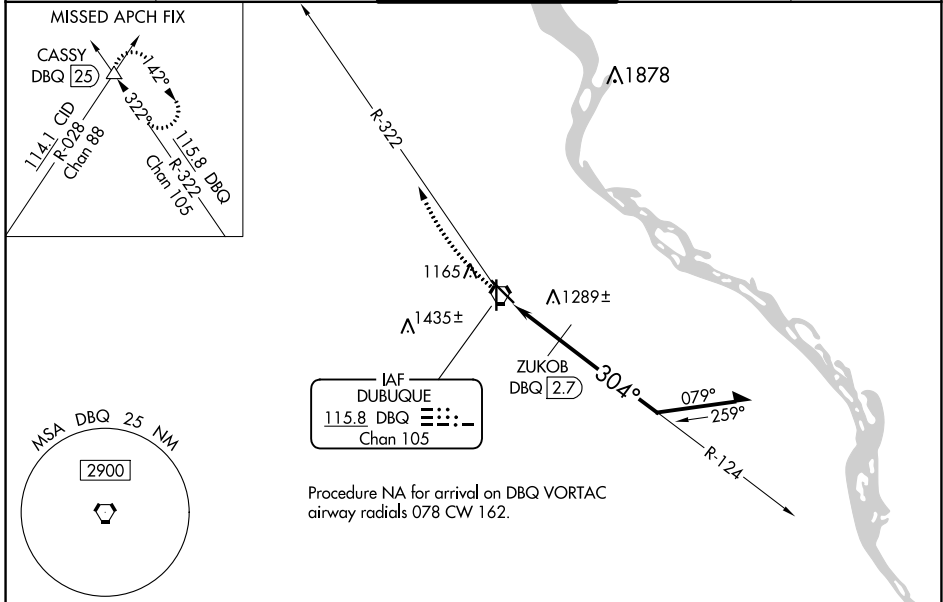
VORTAC DBQ 115.8 Chan 105	APP CRS 304°	Rwy Idg TDZE Apt Elev 6502 1062 1077
--	------------------------	--

VOR RWY 31

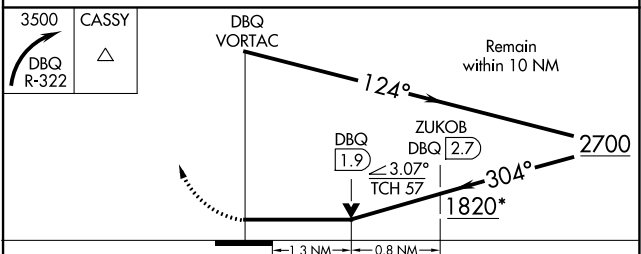
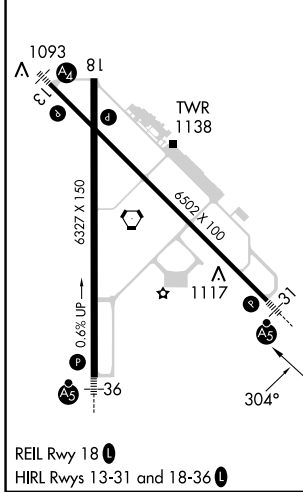
DUBUQUE RGNL (DBQ)

<p>⚠ VOR minimums: For inop ALS, increase S-31 Cats C and D visibility to 2 SM. ZUKOB fix minimums: For inop ALS, increase S-31 Cats C and D visibility to 1½ SM.</p>	<p>MALSR </p>	<p>MISSED APPROACH: Climbing right turn to 3500 on DBQ VORTAC R-322 to CASSY INT/ 25 DME and hold.</p>
--	-------------------	--

ATIS 127.25	CHICAGO CENTER 133.95 281.4	DUBUQUE TOWER* 119.5 (CTAF) 0 254.4	GND CON 121.8	UNICOM 122.95
-----------------------	---------------------------------------	---	-------------------------	-------------------------



ELEV 1077	D	TDZE 1062
-----------	----------	-----------



CATEGORY	A	B	C	D
S-31	1820-½ 758 (800-½)	1820-¾ 758 (800-¾)	1820-1¼ 743 (800-2¼)	758 (800-1¼)
C CIRCLING	1820-1 743 (800-1)	1820-1¼ 743 (800-1¼)	1820-2¼ 743 (800-2¼)	1820-2½ 743 (800-2½)
ZUKOB FIX MINIMUMS				
S-31	1540-½	478 (500-½)	1540-1	478 (500-1)
C CIRCLING	1580-1 503 (600-1)	1600-1 523 (600-1)	1600-1½ 523 (600-1½)	1800-2 723 (800-2)