

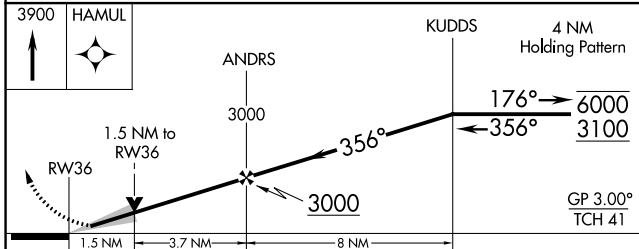
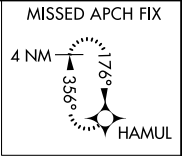
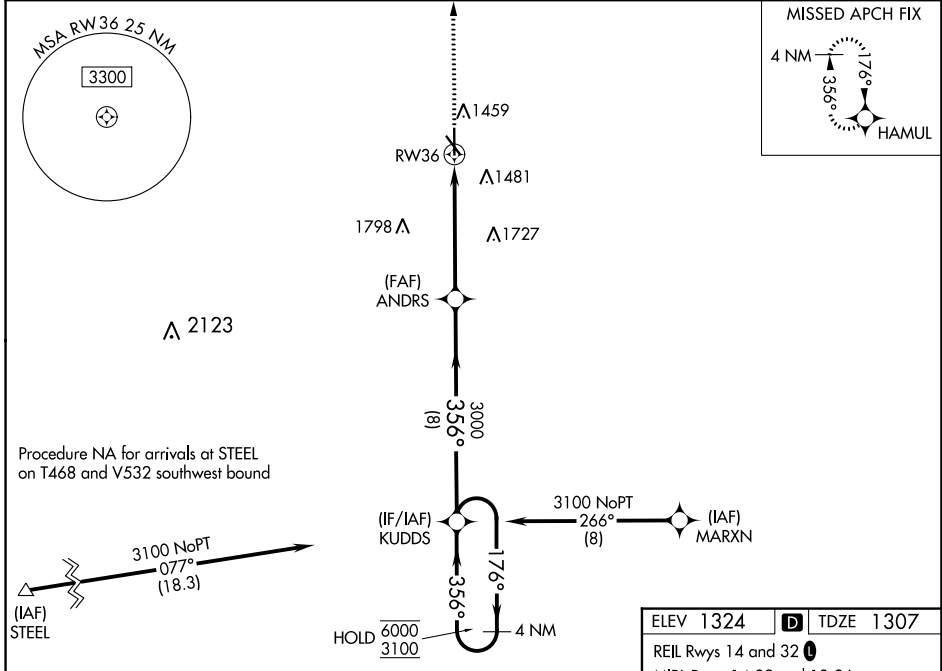
WAAS CH 61099 W36A	APP CRS 356°	Rwy Idg TDZE 1307 Apt Elev 1324
--	------------------------	---

RNAV (GPS) RWY 36

BEATRICE MUNI (BIE)

RNP APCH - GPS.	MALSR	MISSED APPROACH: Climb to 3900 direct HAMUL and hold.
<p>⚠ For uncompensated Baro-VNAV systems, LNAV/VNAV NA below -17°C or above 54°C. When ALS inop increase LNAV Cats A/B to 1 SM. Inop table does not apply to LPV and LNAV/VNAV all Cats.</p>		

AWOS-3 125.325	MINNEAPOLIS CENTER 126.4 317.7	UNICOM 122.8 (CTAF)
--------------------------	--	-------------------------------



ELEV 1324	TDZE 1307
REIL Rwy 14 and 32	
MIRL Rwy 14-32 and 18-36	

5602 X 100

2401 X 75

0-38 ft

36

356°

CATEGORY	A	B	C	D
LPV DA		1507-3/4	200 (200-3/4)	
LNAV/VNAV DA		1557-3/4	250 (300-3/4)	
LNAV MDA	1840-3/4	533 (600-3/4)	1840-1	533 (600-1)
CIRCLING	1840-1	516 (600-1)	2000-2 676 (700-2)	2100-2 1/2 776 (800-2 1/2)

NC-2, 11 JUL 2024 to 08 AUG 2024

NC-2, 11 JUL 2024 to 08 AUG 2024