

APP CRS	Rwy Idg	7302
316°	TDZE	806
	Apt Elev	808

RNAV (GPS) RWY 32

SOUTHERN WISCONSIN RGNL (JVL)

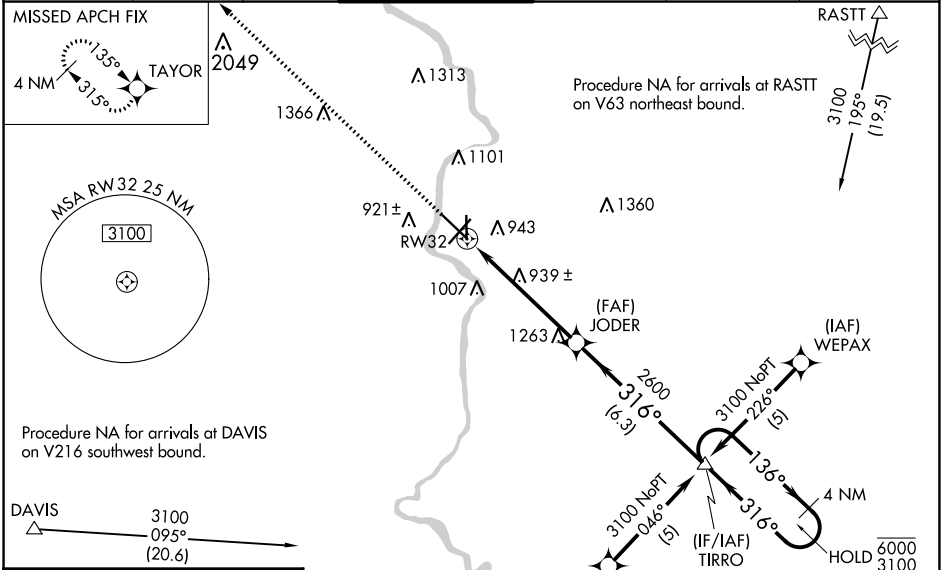
RNP APCH-GPS.

NA Circling Rwy 18 NA at night. Baro-VNAV and VDP NA when using Rockford altimeter setting. For uncompensated Baro-VNAV systems, procedure NA below -16° C or above 54°C. When local altimeter setting not received, use Rockford altimeter setting and increase LNAV/VNAV DA to 1289 feet and all MDAs 80 feet; increase LNAV/VNAV all Cats visibility ¼ SM, LNAV Cat C/D visibility ⅓ SM, and Circling Cat C/D visibility ¼ SM. For inop ALS when using Rockford altimeter setting, increase LNAV/VNAV all Cats visibility and LNAV Cat C/D visibility to 1⅓ SM.

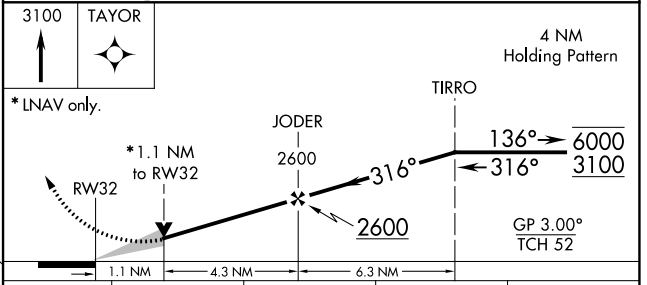
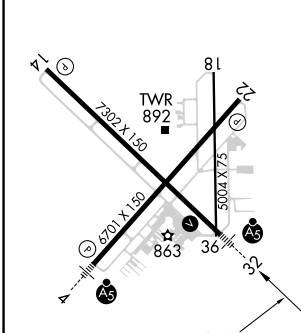
MALS R

MISSED APPROACH: Climb to 3100 direct TAYOR and hold.

ATIS	ROCKFORD APP CON	JANESVILLE TOWER ★	GND CON	CLNC DEL	UNICOM
128.25	121.0 327.0	118.8 (CTAF) 0 225.4	121.65	121.65	122.95



ELEV 808	D	TDZE 806
----------	----------	----------



CATEGORY	A	B	C	D
LNAV/VNAV DA	1220-3/4 414 (500-3/4)			
LNAV MDA	1200-1/2	394 (400-1/2)	1200-5/8	394 (400-5/8)
CIRCLING	1260-1 452 (500-1)	1320-1 512 (600-1)	1420-1 3/4 612 (700-1 3/4)	1460-2 652 (700-2)

REIL Rwy 14 and 22

MIRL Rwy 18-36

HIRL Rwy 4-22 and 14-32

EC-3, 11 JUL 2024 to 08 AUG 2024

EC-3, 11 JUL 2024 to 08 AUG 2024