

WAAS CH 93832 W02A	APP CRS 023°	Rwy ldg TDZE 342 Apt Elev 342	3997
--	------------------------	---	-------------

RNAV (GPS) RWY 2

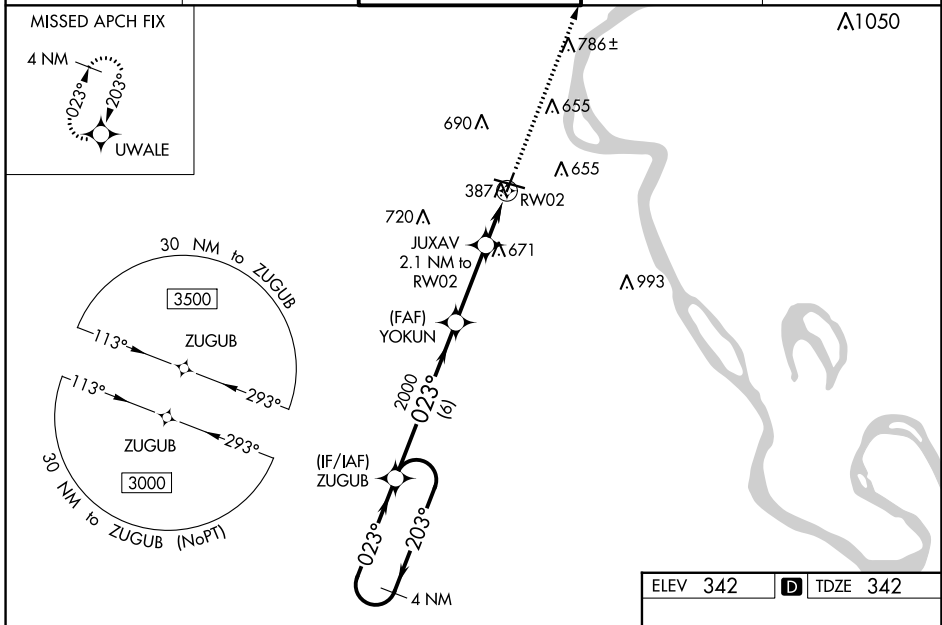
CAPE GIRARDEAU RGNL (CGI)

RNP APCH - GPS.

⚠ For uncompensated Baro-VNAV systems, LNAV/VNAV NA below -17°C or above 54°C. When local altimeter setting not received, use Cairo altimeter setting and increase LPV DA to 849 feet, LNAV/VNAV DA to 905 feet, and all visibilities ¼ SM. Increase all MDAs 60 feet and LNAV visibility Cat C/D ½ SM, and Circling visibility Cat C/D ¼ SM. Rwy 2 helicopter visibility reduction below ¾ SM NA. Baro-VNAV and VDP NA when using Cairo Rgnl altimeter setting.

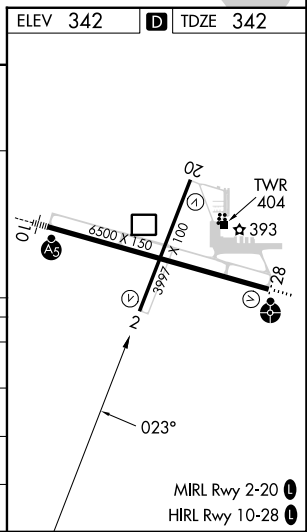
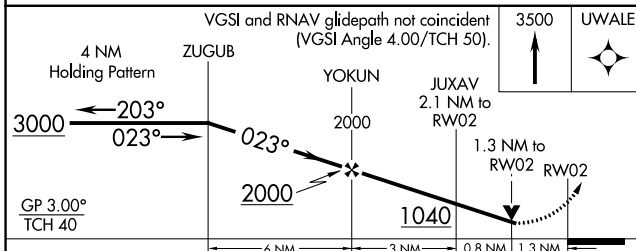
MISSED APPROACH: Climb to 3500 direct UWALE and hold, continue climb-in-hold to 3500.

ASOS 120.55	MEMPHIS CENTER 133.65 292.15	CAPE GIRARDEAU TOWER * 125.525 (CTAF) Ⓛ	GND CON 124.7	UNICOM 122.95
-----------------------	--	---	-------------------------	-------------------------



NC-3, 11 JUL 2024 to 08 AUG 2024

NC-3, 11 JUL 2024 to 08 AUG 2024



CATEGORY	A	B	C	D
LPV DA		801-1 $\frac{3}{8}$	459 (500-1 $\frac{3}{8}$)	
LNAV/VNAV DA		857-1 $\frac{3}{8}$	515 (600-1 $\frac{3}{8}$)	
LNAV MDA	940-1	598 (600-1)	940-1 $\frac{3}{4}$	598 (600-1 $\frac{3}{4}$)
C CIRCLING	940-1 598 (600-1)	960-1 618 (700-1)	1000-1 $\frac{3}{4}$ 658 (700-1 $\frac{3}{4}$)	1080-2 $\frac{1}{4}$ 738 (800-2 $\frac{1}{4}$)