


WAAS CH 90199 W28A	APP CRS 288°	Rwy ldg TDZE 341 Apt Elev 342
--	------------------------	---

RNAV (GPS) RWY 28

CAPE GIRARDEAU RGNL (CGI)

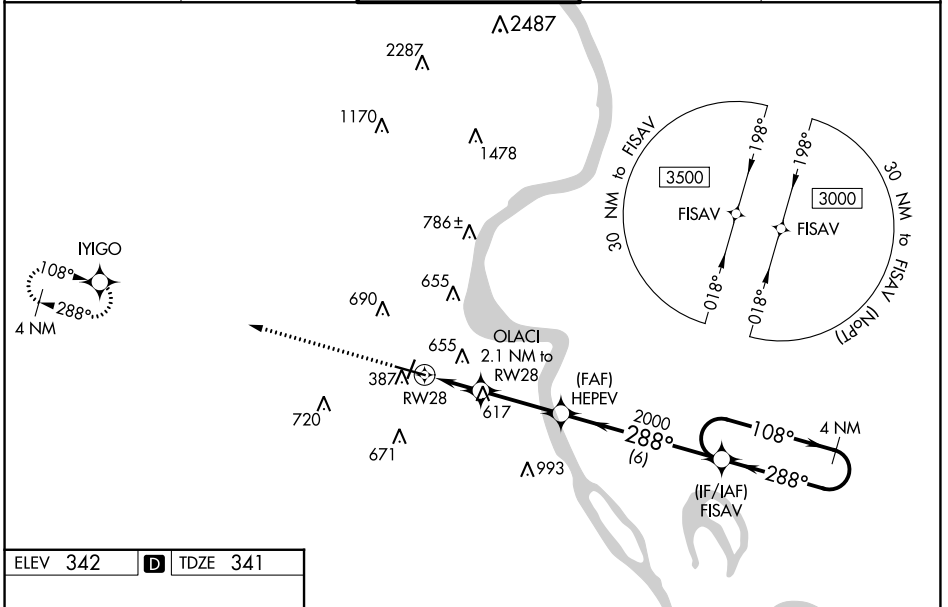
RNP APCH - GPS.

⚠ When local altimeter setting not received, use Cairo altimeter setting and increase LPV DA to 771 feet and all visibilities 1/2 SM. Increase LNAV/VNAV DA to 896 feet; increase all MDAs 60 feet and LNAV and Circling visibility Cats C/D 1/4 SM. VDP NA when using Cairo Rgnl altimeter setting. Rwy 28 helicopter visibility reduction below 3/4 SM NA. For inop ALS, increase LPV Cat A/B visibility to 1 1/2 SM. Inop table does not apply to LNAV/VNAV all Cats. For inop ALS when using Cairo altimeter setting, increase LPV Cat A/B visibility to 1 1/2 SM. Baro-VNAV NA.



ODALS 

MISSED APPROACH:
Climb to 3000 direct IYIGO and hold.

ASOS 120.55	MEMPHIS CENTER 133.65 292.15	CAPE GIRARDEAU TOWER * 125.525 (CTAF) 	GND CON 124.7	UNICOM 122.95
-----------------------	--	---	-------------------------	-------------------------



ELEV 342 **D** TDZE 341

MIRL Rwy 2-20 
HIRL Rwy 10-28 

	3000 IYIGO	HEPEV	FISAV	4 NM Holding Pattern
	OLACI 2.1 NM to RWY 28	2000		
	1.6 NM to RWY 28	1040	288°	108°
	RWY 28	2000	288°	3000
	GP 3.00°			TCH 38
	1.6 NM	0.5 NM	3 NM	6 NM
CATEGORY	A	B	C	D
LPV DA		723-1	382 (400-1)	
LNAV/VNAV DA		848-1 3/8	507 (600-1 3/8)	
LNAV MDA	880-3/4	539 (600-3/4)	880-1 3/8	539 (600-1 3/8)
C CIRCLING	880-1 538 (600-1)	960-1 618 (700-1)	1000-1 3/4 658 (700-1 3/4)	1080-2 1/4 738 (800-2 1/4)

NC-3, 11 JUL 2024 to 08 AUG 2024

NC-3, 11 JUL 2024 to 08 AUG 2024