

LOC/DME I-ISP 108.3 Chan 20	APP CRS 059°	Rwy Idg TDZE Apt Elev	7006 94 99
--	------------------------	-----------------------------	---------------------------------------

ILS or LOC RWY 6

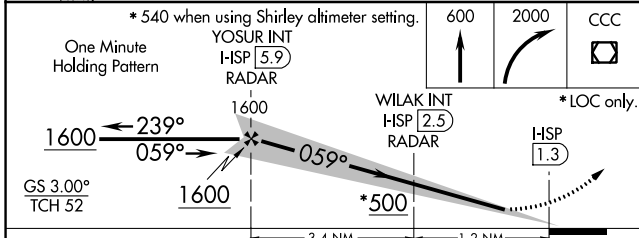
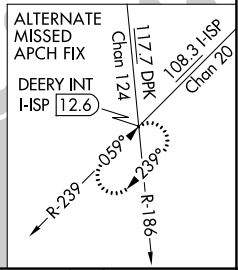
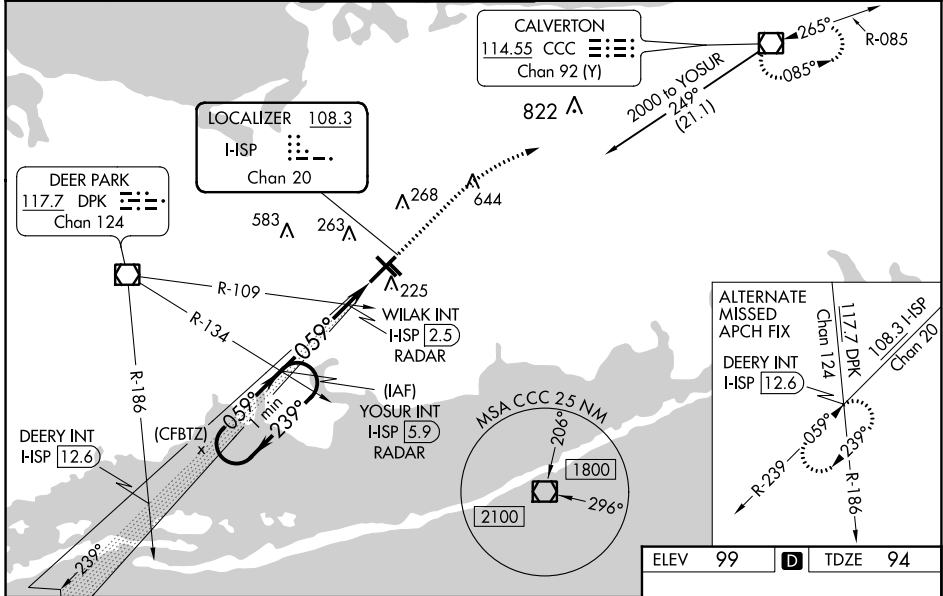
LONG ISLAND MAC ARTHUR (ISP)

⚠ When local altimeter setting not received, use Shirley altimeter setting and increase all DA 28 feet and all MDA 40 feet, increase S-LOC 6 Cat C and D visibility to RVR 4500 and Circling Cat C and D visibility $\frac{1}{4}$ mile. Increase WILAK fix minimums S-LOC 6 Cat C and D visibility to RVR 3500. For inoperative MALSR, increase S-LOC 6 Cat C and D visibility to RVR 6000. Increase WILAK fix minimums S-LOC 6 Cats C and D visibility to RVR 5500.
 ** RVR 1800 authorized with use of FD or AP or HUD to DA, NA when using Shirley altimeter setting.

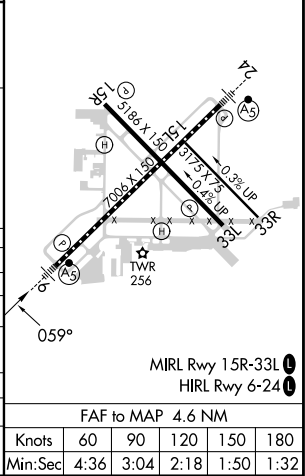
MALSR

MISSED APPROACH:
 Climb to 600 then climbing right turn to 2000 direct CCC VOR/DME and hold.

ATIS 120.725	NEW YORK APP CON 120.05 343.75	LONG ISLAND TOWER* 119.3 (CTAF) 335.5	GND CON 135.3	CLNC DEL 121.85	UNICOM 122.95
------------------------	--	--	-------------------------	---------------------------	-------------------------



ELEV 99	D	TDZE 94
---------	---	---------



CATEGORY	A	B	C	D
S-ILS 6	** 294/24 200 (200-$\frac{1}{2}$)			
S-LOC 6	500/24	406 (500- $\frac{1}{2}$)	500/40	406 (500- $\frac{3}{4}$)
C CIRCLING	600-1 501 (600-1)	660-1 561 (600-1)	660-1 $\frac{1}{2}$ 561 (600-1 $\frac{1}{2}$)	960-2 $\frac{3}{4}$ 861 (900-2 $\frac{3}{4}$)
WILAK FIX MINIMUMS (DUAL VOR RECEIVERS OR DME REQUIRED)				
S-LOC 6	440/24	346 (400- $\frac{1}{2}$)	440/30	346 (400- $\frac{3}{8}$)
C CIRCLING	600-1 501 (600-1)	660-1 561 (600-1)	660-1 $\frac{1}{2}$ 561 (600-1 $\frac{1}{2}$)	960-2 $\frac{3}{4}$ 861 (900-2 $\frac{3}{4}$)

FAF to MAP 4.6 NM					
Knots	60	90	120	150	180
Min:Sec	4:36	3:04	2:18	1:50	1:32

NE-2, 11 JUL 2024 to 08 AUG 2024

NE-2, 11 JUL 2024 to 08 AUG 2024