

EASTOVER, SOUTH CAROLINA

TACAN RWY 14

VORTAC MMT 113.2 Chan 79	APCH CRS 132°	Rwy Idg TDZE 251 Arprt Elev 254	9009
--	-------------------------	--	-------------

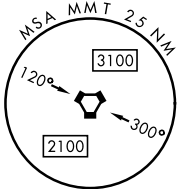
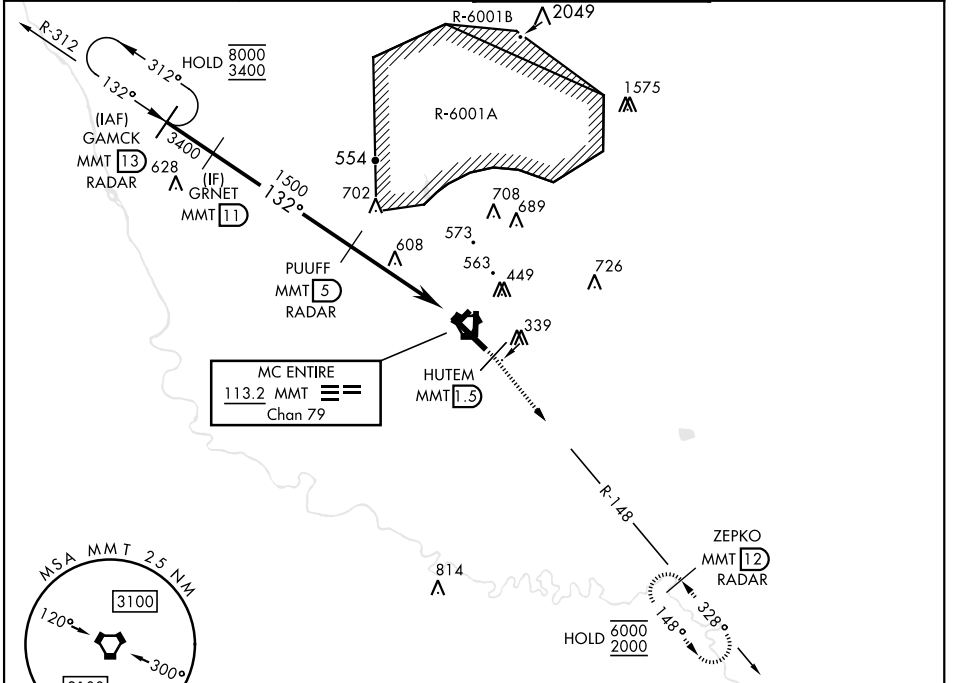
AL-951 [USAF]

MC ENTIRE JNGB (KMMT)

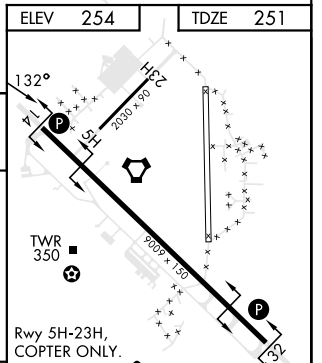
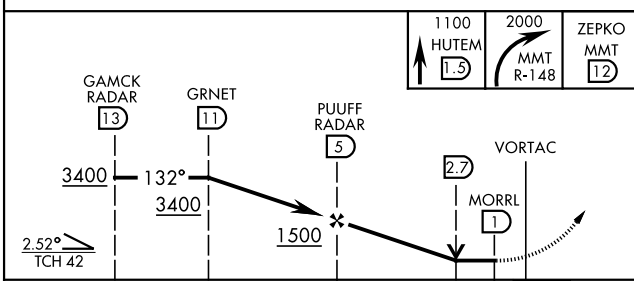
*** Circling to Rwy 05H-23H NA at night.**

MISSED APPROACH: Climb to 1100 direct HUTEM/1.5 DME then climbing right turn to 2000 intercept MMT R-148 direct ZEPKO/12 DME and hold.

ATIS ★ 327.05	SHAW APP CON 125.4 318.1	TOWER ★ 132.4 (CTAF) 253.5	GND CON 127.625 226.675
-------------------------	------------------------------------	--------------------------------------	-----------------------------------



EMERG SAFE ALT 100 NM 3800



	ELEV 254	TDZE 251				
CATEGORY	A	B	C	D	E	
S-14	880-1	629 (700-1)	880-1 $\frac{3}{4}$	629 (700-1 $\frac{3}{4}$)		
CIRCLING*	880-1	626 (700-1)	880-1 $\frac{3}{4}$	1020-2 $\frac{1}{2}$	1020-2 $\frac{3}{4}$	
			626 (700-1 $\frac{3}{4}$)	766 (800-2 $\frac{1}{2}$)	766 (800-2 $\frac{3}{4}$)	
	FAF to MAP 4.0 NM					
	Knots	60	90	120	150	180
	Min:Sec	4:00	2:40	2:00	1:36	1:20

EASTOVER, SOUTH CAROLINA

33°55'N-80°48'W

MC ENTIRE JNGB (KMMT)

Amdt 1 25MAY17

TACAN RWY 14

SE-2, 11 JUL 2024 to 08 AUG 2024

SE-2, 11 JUL 2024 to 08 AUG 2024