

LOC/DME I-ONT 109.7 Chan 34	APP CRS 258°	Rwy Idg TDZE 932 Apt Elev 944
---	------------------------	---

ILS RWY 26R (CAT II & III)

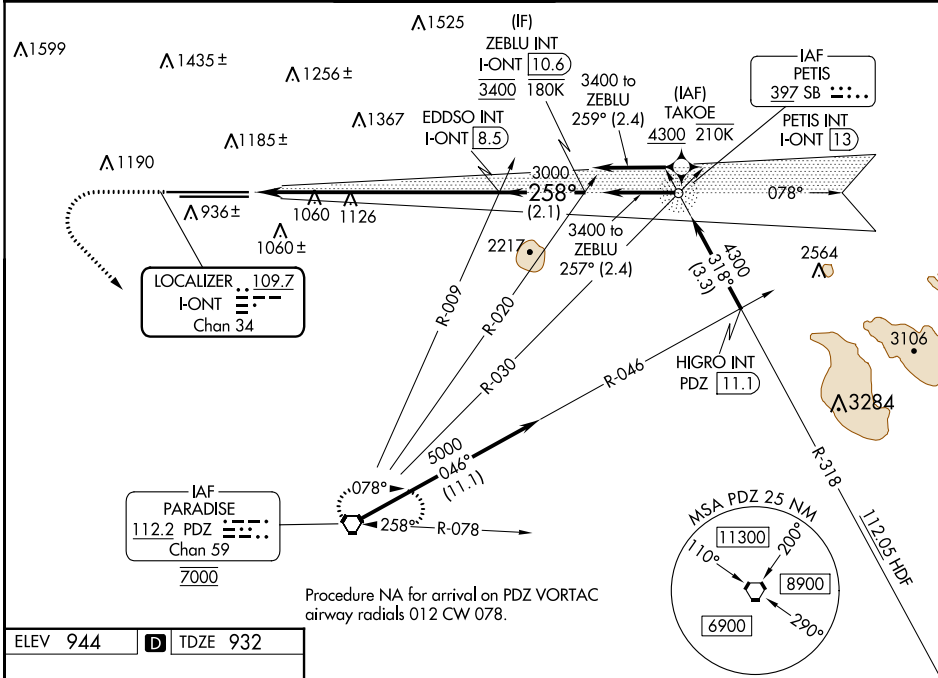
ONTARIO INTL (ONT)

RNP APCH - GPS. From TAKOE.

ALSF-2

MISSED APPROACH: Climb to 2800 then climbing left turn to 5400 direct PDZ VORTAC and hold, continue climb-in-hold to 5400.

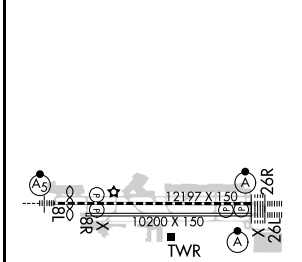
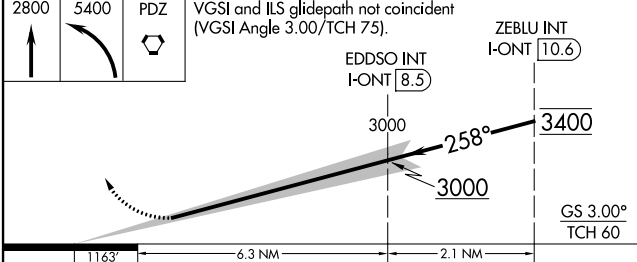
D-ATIS 124.25	SOCAL APP CON 127.0 318.2	ONTARIO TOWER 120.6 360.775	GND CON 121.9 257.8	CLNC DEL 132.9	CPDLC
-------------------------	-------------------------------------	---------------------------------------	-------------------------------	--------------------------	-------



SW-3, 11 JUL 2024 to 08 AUG 2024

SW-3, 11 JUL 2024 to 08 AUG 2024

ELEV 944 **D** TDZE 932



CATEGORY	A	B	C	D
S-ILS 26R	CAT II RA 100/12 100 DA 1032			
S-ILS 26R	CAT III RVR 03			

CATEGORY II & III ILS - SPECIAL AIRCREW & AIRCRAFT CERTIFICATION REQUIRED