

APP CRS	Rwy Idg	10200
258°	TDZE	926
	Apt Elev	944

RNAV (RNP) Z RWY 26L

ONTARIO INTL (ONT)

RNP AR APCH - GPS.		ALSIF-2 	MISSED APPROACH: Climb to 3400 on track 258° to AXOYO and track 174° to LAKVE and track 122° to MARIAM and track 079° to ADRYN and hold.
<p> For uncompensated Baro-VNAV systems, procedure NA below 1°C or above 54°C. For inop ALS, increase RNP 0.10 visibility all Cats to RVR 4500, RNP 0.17 visibility all Cats to RVR 5000, RNP 0.30 visibility all Cats to RVR 6000.</p>			

D-ATIS 124.25	SOCAL APP CON 127.0 318.2	ONTARIO TOWER 120.6 360.775	GND CON 121.9 257.8	CLNC DEL 132.9	CPDLC
-------------------------	-------------------------------------	---------------------------------------	-------------------------------	--------------------------	-------



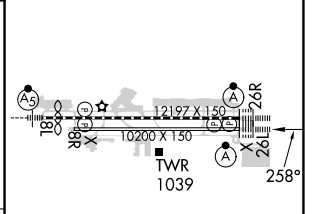
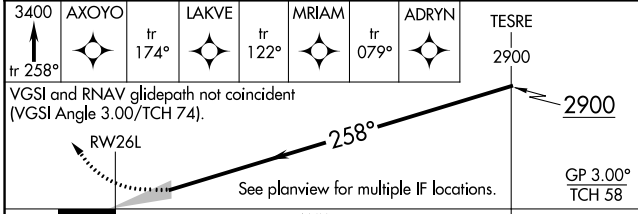
SW-3, 11 JUL 2024 to 08 AUG 2024

SW-3, 11 JUL 2024 to 08 AUG 2024

ELEV 944	TDZE 926
----------	----------

Procedure NA for arrivals at GAREY on V8-21 northeast bound.

Procedure NA for arrival on PDZ VORTAC airway radials 012 CW 078.



CATEGORY	A	B	C	D
RNP 0.10 DA		1203/24	277 (300-½)	
RNP 0.17 DA		1245/24	319 (400-½)	
RNP 0.30 DA		1322/35	396 (400-¾)	

AUTHORIZATION REQUIRED

TDZ/CL Rwys 8L, 26R and 26L
HIRL Rwys 8L-26R and 8R-26L