

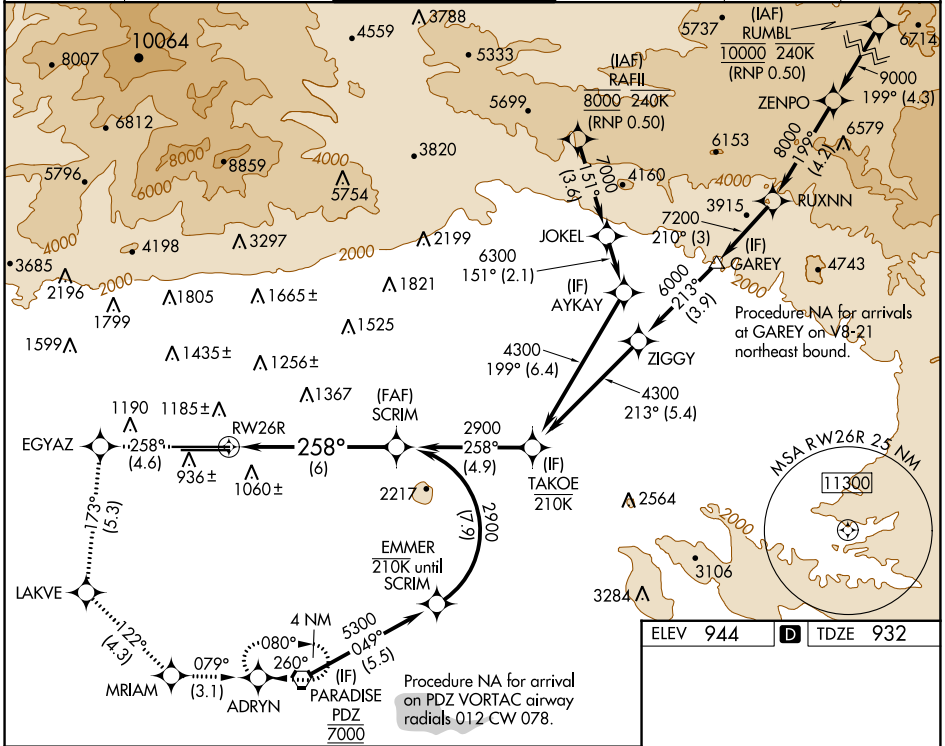
APP CRS	Rwy Idg	<b>12197</b>
<b>258°</b>	TDZE	<b>932</b>
	Apt Elev	<b>944</b>

# RNAV (RNP) Z RWY 26R

ONTARIO INTL (ONT)

RNP AR APCH - GPS.	ALSF-2 	MISSED APPROACH: Climb to 3400 on track 258° to EGYAZ and track 173° to LAKVE and track 122° to MARIAM and on track 079° to ADRYN and hold.
<p>▼ For uncompensated Baro-VNAV systems, procedure NA below 1°C or above 54°C. For inop ALS, increase RNP 0.12 visibility all Cats to RVR 4500, RNP 0.21 visibility all Cats to RVR 5500, RNP 0.30 visibility all Cats to RVR 6000.</p>		

D-ATIS <b>124.25</b>	SOCAL APP CON <b>127.0 318.2</b>	ONTARIO TOWER <b>120.6 360.775</b>	GND CON <b>121.9 257.8</b>	CLNC DEL <b>132.9</b>	CPDLC
-------------------------	-------------------------------------	---------------------------------------	-------------------------------	--------------------------	-------



SW-3, 11 JUL 2024 to 08 AUG 2024

SW-3, 11 JUL 2024 to 08 AUG 2024

3400	EGYAZ	LAKVE	MARIAM	ADRYN	SCRIM
tr 258°	tr 173°	tr 122°	tr 079°	tr 079°	2900
<p>VGSI and RNAV glidepath not coincident (VGSI Angle 3.00/TCH 75). See planview for multiple IF locations.</p>					
<p>6 NM</p>					
CATEGORY	A	B	C	D	
RNP 0.12 DA		1239/40	307 (300-¾)		
RNP 0.21 DA		1297/40	365 (400-¾)		
RNP 0.30 DA		1321/40	389 (400-¾)		
<b>AUTHORIZATION REQUIRED</b>					

ELEV 944 **D** TDZE 932

TDZ/CL Rwsy 8L, 26R and 26L  
HIRL Rwsy 8L-26R and 8R-26L