

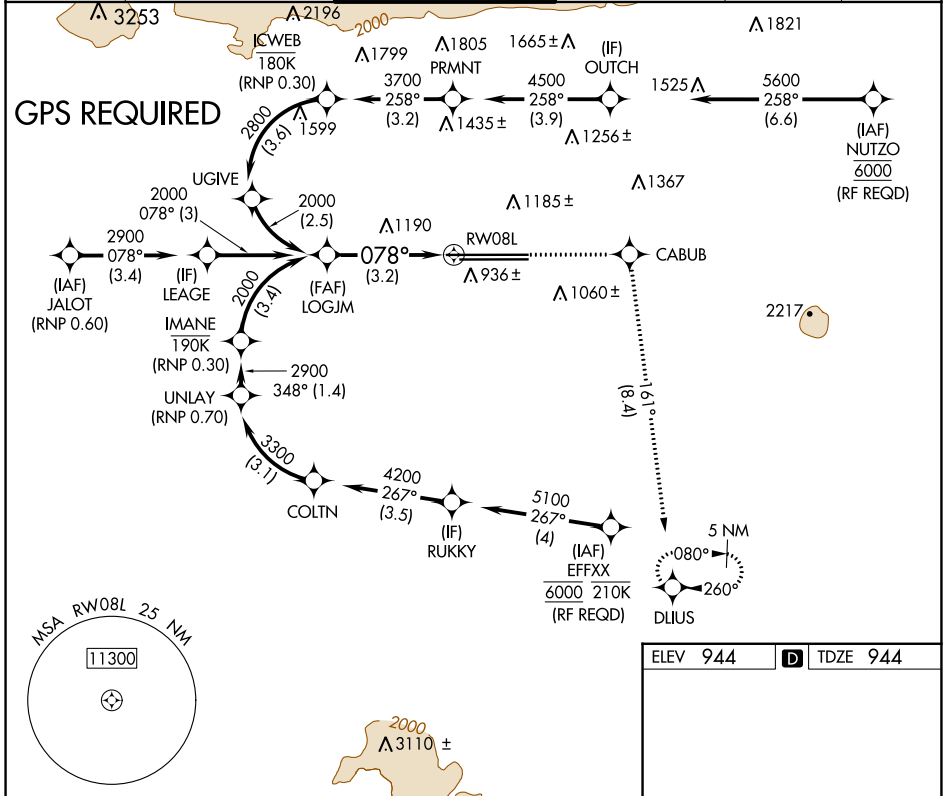
APP CRS	Rwy Idg	11200
078°	TDZE	944
	Apt Elev	944

RNAV (RNP) Z RWY 8L

ONTARIO INTL (ONT)

<p>▽ For uncompensated Baro-VNAV systems, procedure NA below 2°C (36°F) or above 54°C (130°F).</p> <p>▲ NA</p>	<p>MALSR</p>	<p>MISSED APPROACH: Climb to 5300 direct CABUB on track 161° to DLIUS and hold, continue climb-in-hold to 5300.</p>
--	---------------------	--

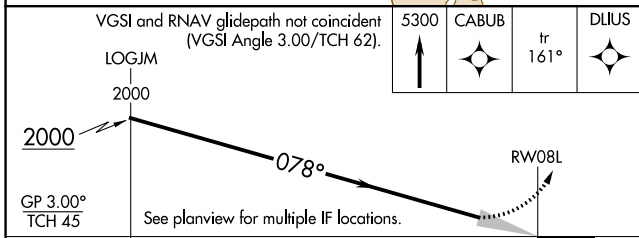
D-ATIS 124.25	SOCAL APP CON 127.0 318.2	ONTARIO TOWER 120.6 360.775	GND CON 121.9 257.8	CLNC DEL 132.9	CPDLC
-------------------------	-------------------------------------	--	-------------------------------	--------------------------	-------



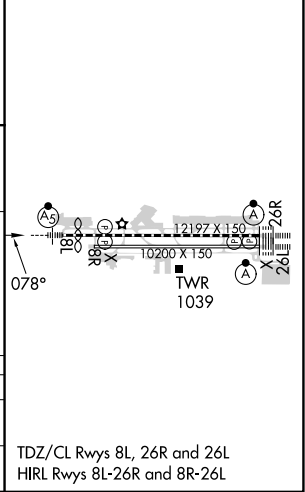
SW-3, 11 JUL 2024 to 08 AUG 2024

SW-3, 11 JUL 2024 to 08 AUG 2024

ELEV 944	D TDZE 944
----------	-------------------



<p>VGSI and RNAV glidepath not coincident (VGSI Angle 3.00/TCH 62).</p> <p>LOGJM 2000</p> <p>GP 3.00° TCH 45</p> <p>3.2 NM</p>	<p>5300 CABUB</p> <p>↑</p>	<p>DLIUS</p> <p>tr 161°</p>		
CATEGORY	A	B	C	D
RNP 0.30 DA	1490-13 ³ / ₈		546 (600-1 ³ / ₈)	



AUTHORIZATION REQUIRED

TDZ/CL Rwy 8L, 26R and 26L
HIRL Rwy 8L-26R and 8R-26L