


WAAS CH <b>45807</b> <b>W08B</b>	APP CRS <b>078°</b>	Rwy Idg <b>11200</b> TDZE <b>944</b> Apt Elev <b>944</b>
--	------------------------	--

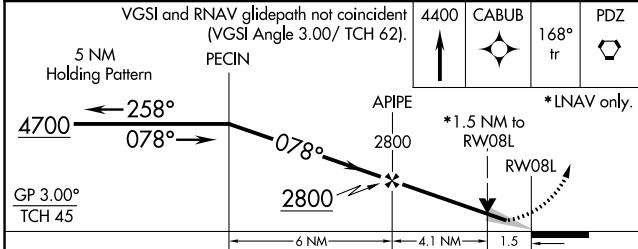
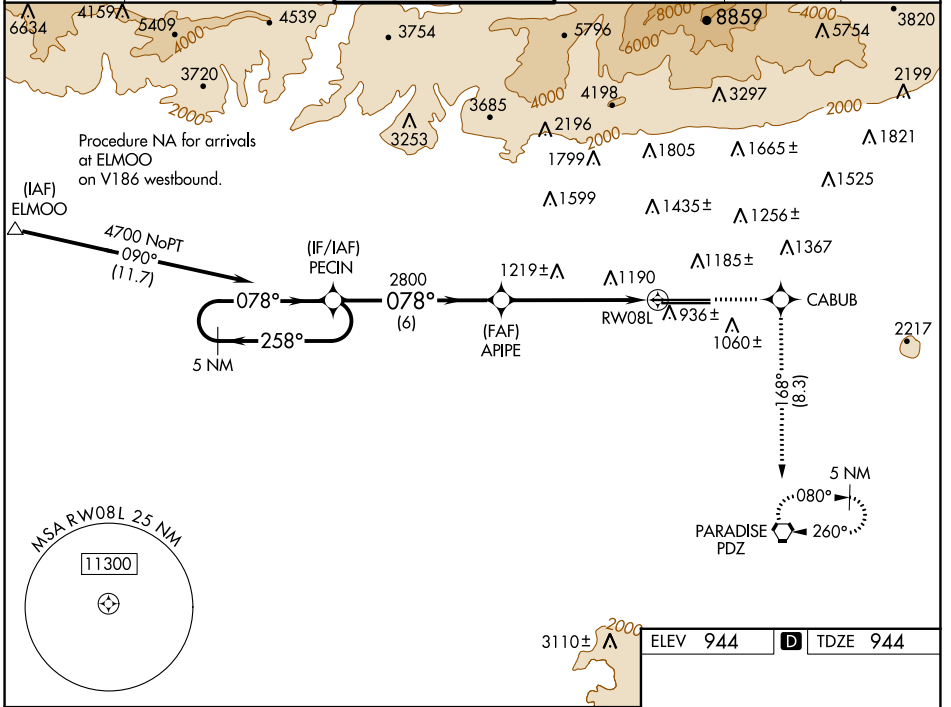
# RNAV (GPS) Y RWY 8L

ONTARIO INTL (ONT)

**▽** For uncompensated Baro-VNAV systems, LNAV/VNAV NA below -16°C (4°F) or above 47°C (116°F). Circling NA north of Rwy 8L-26R.  
DME/DME RNP -0.3 NA. For inoperative MALSR increase LPV visibility all Cats to RVR 6000.

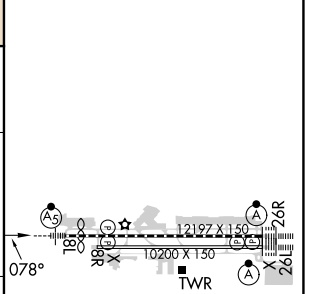
**MALSR**  **MISSED APPROACH:** Climb to 4400 direct CABUB and on track 168° to PDZ VORTAC and hold, continue climb-in-hold to 4700.

D-ATIS <b>124.25</b>	SOCAL APP CON <b>127.0 318.2</b>	ONTARIO TOWER <b>120.6 360.775</b>	GND CON <b>121.9 257.8</b>	CLNC DEL <b>132.9</b>	CPDLC
-------------------------	-------------------------------------	---------------------------------------	-------------------------------	--------------------------	-------



ELEV 944	<b>D</b> TDZE 944
----------	-------------------

CATEGORY	A	B	C	D
LPV DA		1266/30	322 (400-5%)	
LNAV/VNAV DA		1520-1½	576 (600-1½)	
LNAV MDA	1480/24	536 (600-½)	1480/55	536 (600-1)
<b>C</b> CIRCLING	1480-1	536 (600-1)	1540-1½	1600-2
			596 (600-1½)	656 (700-2)



SW-3, 11 JUL 2024 to 08 AUG 2024

SW-3, 11 JUL 2024 to 08 AUG 2024