

WAAS CH 99615 W12A	APP CRS 125°	Rwy Idg TDZE Apt Elev	5301 1128 1156
--	------------------------	-----------------------------	---

RNAV (GPS) RWY 12

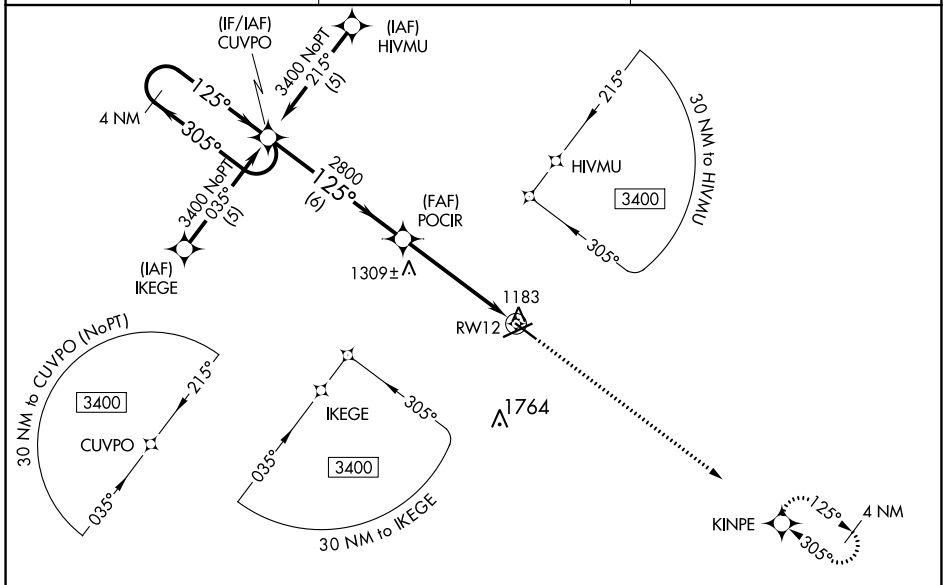
FORT DODGE RGNL (FOD)

RNP APCH.

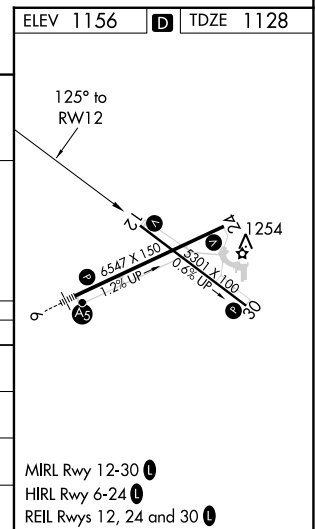
▼ For uncompensated Baro-VNAV systems, LNAV/VNAV NA below -17°C or above 54°C. Visibility reduction by helicopters NA. When local altimeter setting not received, use Webster City altimeter setting: increase LPV DA to 1447 feet and visibility all Cats ¼ SM; increase LNAV/VNAV DA to 1495 feet; increase all MDAs 60 feet and Circling Cat C visibility ¼ SM. VDP and Baro-VNAV NA when using Webster City altimeter setting.

MISSED APPROACH: Climb to 3400 direct KINPE and hold.

AWOS-3PT 118.775	MINNEAPOLIS CENTER 134.0 288.3	UNICOM 123.0 (CTAF) 0
----------------------------	--	---------------------------------



4 NM Holding Pattern		CUVPO	PO CIR	KINPE
3400	← 305°	→ 125°	→ 125°	→ 125° to RWY 12
GP 3.00° TCH 51		2800	*1.3 NM to RWY 12	*LNAV only
		6 NM	3.8 NM	1.3
CATEGORY	A	B	C	D
LPV DA	1405-1		277 (300-1)	
LNAV/VNAV DA	1453-1¼		325 (300-1¼)	
LNAV MDA	1560-1	432 (500-1)	1560-1½ 432 (500-1½)	1560-1½ 432 (500-1½)
CIRCLING	1560-1 404 (500-1)	1620-1 464 (500-1)	1740-1½ 584 (600-1½)	2080-3 924 (1000-3)



MIRL Rwy 12-30 0
HIRL Rwy 6-24 0
REIL Rwy 12, 24 and 30 0

NC-3, 11 JUL 2024 to 08 AUG 2024

NC-3, 11 JUL 2024 to 08 AUG 2024