

PITTSBURG, KANSAS

AL-981 (FAA)

22195

WAAS CH <b>61130</b> <b>W17A</b>	APP CRS <b>168°</b>	Rwy Idg TDZE Apt Elev	<b>6100</b> <b>936</b> <b>946</b>
--	------------------------	-----------------------------	---

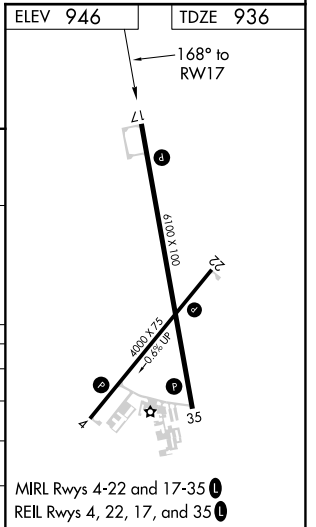
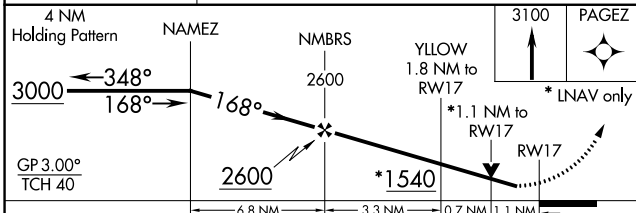
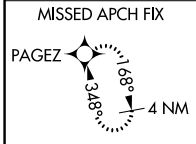
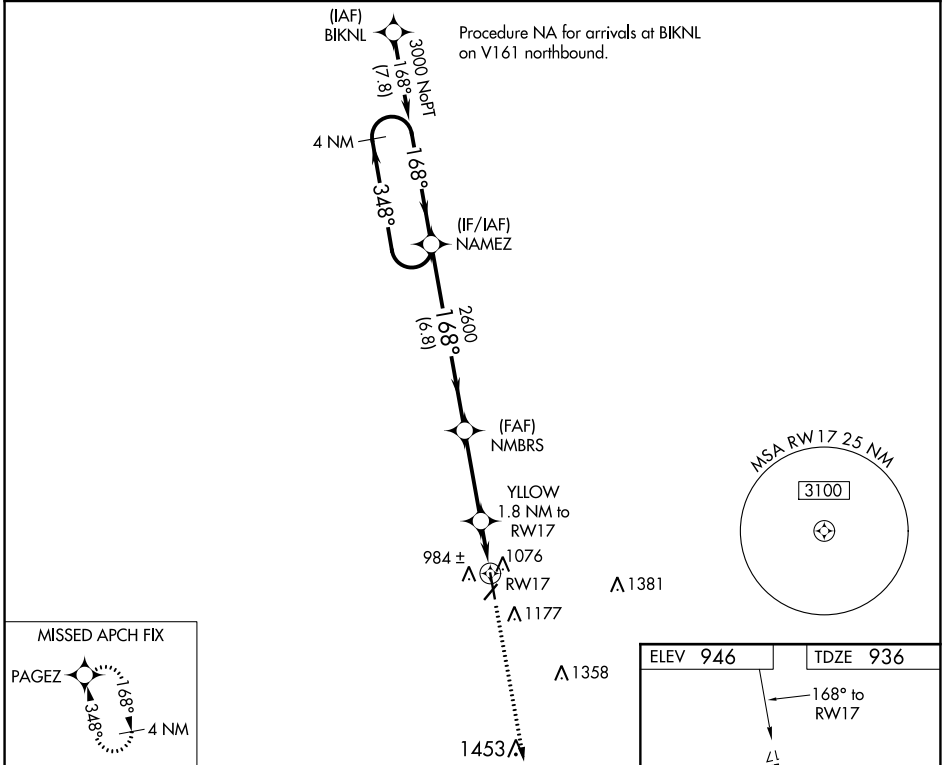
# RNAV (GPS) RWY 17

ATKINSON MUNI (PTS)

**⚠** For uncompensated Baro-VNAV systems, LNAV/VNAV NA below -16°C (4°F) or above 54°C (130°F). DME/DME RNP-0.3 NA. Rwy 17 helicopter visibility reduction below ¾ SM NA.

**MISSED APPROACH:** Climb to 3100 direct PAGEZ and hold.

AWOS-3PT <b>118.775</b>	KANSAS CITY CENTER <b>128.6 282.325</b>	GCO <b>121.725</b>	UNICOM <b>123.0 (CTAF) 0</b>
----------------------------	--	-----------------------	---------------------------------



CATEGORY	A	B	C	D
LPV DA	1216-1		280 (300-1)	
LNAV/VNAV DA	1237-1		301 (300-1)	
LNAV MDA	1340-1 404 (400-1)		1340-1½ 404 (400-1½)	
<b>C</b> CIRCLING	1480-1 534 (600-1)		1520-1½ 574 (600-1½) 1720-2½ 774 (800-2½)	

PITTSBURG, KANSAS  
Amdt 3A 01MAR18

37°27'N-94°44'W

# RNAV (GPS) RWY 17

ATKINSON MUNI (PTS)

NC-2, 11 JUL 2024 to 08 AUG 2024

NC-2, 11 JUL 2024 to 08 AUG 2024