

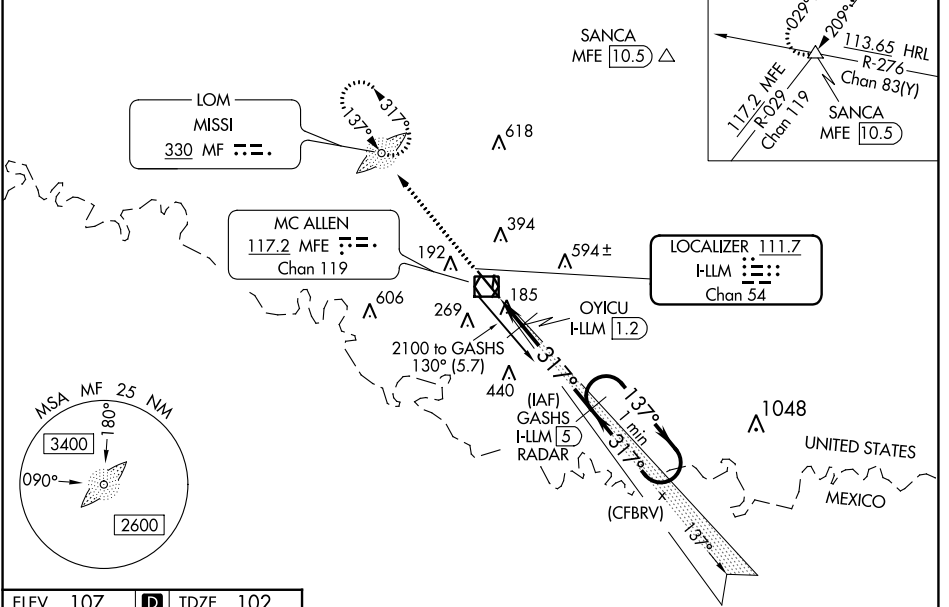
LOC/DME I-LLM <b>111.7</b> Chan <b>54</b>	APP CRS <b>317°</b>	Rwy Idg <b>7120</b> TDZE <b>102</b> Apt Elev <b>107</b>
---	------------------------	---

# ILS or LOC RWY 32

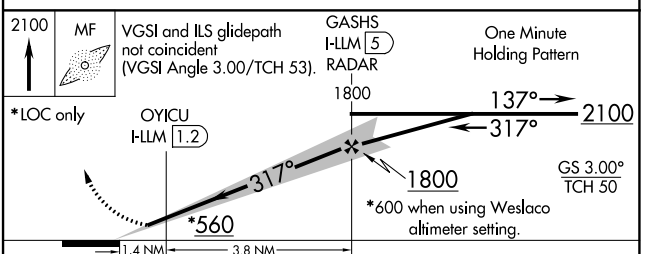
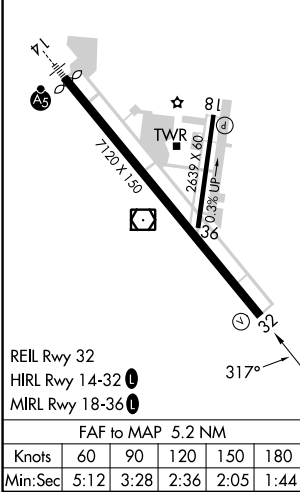
MC ALLEN INTL (MF'E)

<p><b>⚠</b> Circling NA northeast of Rwy 14-32. ADF and DME or Radar required. When local altimeter setting not received, use Weslaco altimeter setting: increase all DA 39 feet and MDA 40 feet.</p>			<p>MISSED APPROACH: Climb to 2100 direct MF LOM and hold</p>	
<p>ATIS <b>128.5</b></p>	<p>VALLEY APP CON <b>126.55 377.2</b></p>	<p>MC ALLEN TOWER ★ <b>118.5 (CTAF) 0 256.9</b></p>	<p>GND CON <b>121.8</b></p>	<p>UNICOM <b>122.95</b></p>

## DME or RADAR REQUIRED



ELEV 107	<b>D</b>	TDZE 102
----------	----------	----------



CATEGORY	A	B	C	D
S-ILS 32	302-3/4		200 (200-3/4)	
S-LOC 32	560-1	458 (500-1)	560-1 3/8	458 (500-1 1/8)
<b>C</b> CIRCLING	580-1	473 (500-1)	580-1 1/2	800-2 1/4 693 (700-2 1/4)
OYICU FIX MINIMUMS				
S-LOC 32	440-1		338 (400-1)	
<b>C</b> CIRCLING	580-1	473 (500-1)	580-1 1/2	800-2 1/4 693 (700-2 1/4)

SC-3, 11 JUL 2024 to 08 AUG 2024

SC-3, 11 JUL 2024 to 08 AUG 2024