


| | | |
|--|------------------------|---|
| WAAS CH 78400 W14A | APP CRS 137° | Rwy Idg 6983 TDZE 107 Apt Elev 107 |
|--|------------------------|---|

RNAV (GPS) RWY 14

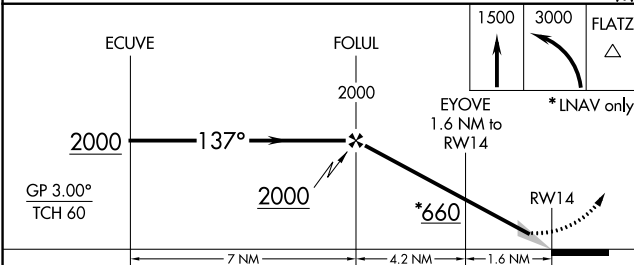
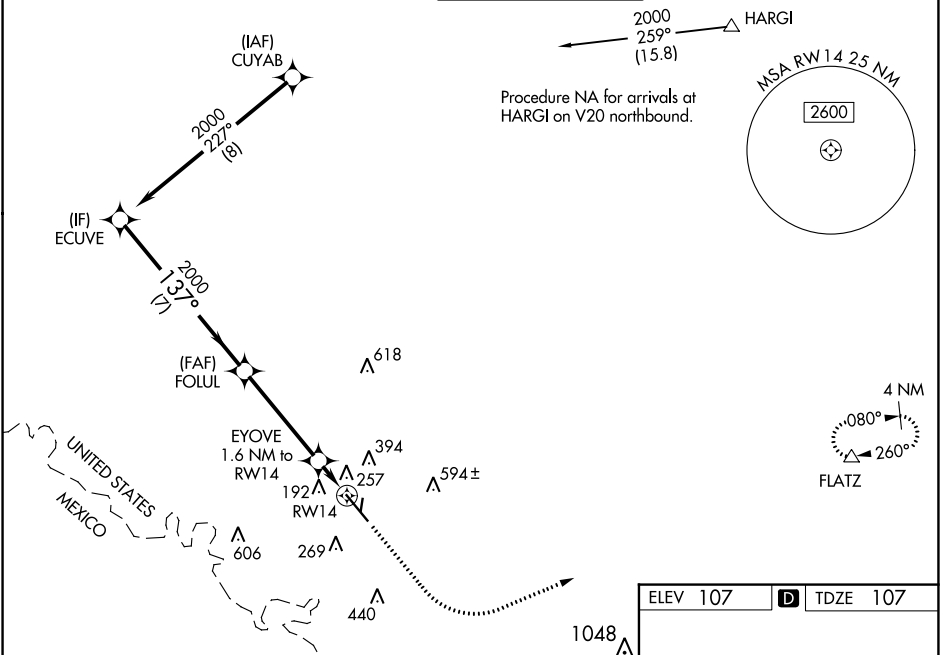
MC ALLEN INTL (MFE)

RNP APCH-GPS.

⚠ Circling NA northeast of Rwy 14-32. For inop ALS, increase LNAV/VNAV visibility all Cats to 3/8 SM and LNAV visibility Cat C/D to 1/8 SM. For inop ALS when using Weslaco altimeter setting, increase LNAV/VNAV visibility all Cats to 1 SM. For uncompensated Baro-VNAV systems, LNAV/VNAV NA below 1°C or above 54°C. When local altimeter setting not received, use Weslaco altimeter setting and increase all DA 39 feet and LNAV/VNAV all Cats visibility 1/8 SM; increase all MDA 40 feet and LNAV Cat C/D visibility 1/8 SM.

MALS  MISSED APPROACH: Climb to 1500 then climbing left turn to 3000 direct FLATZ and hold.

| | | | | |
|----------------------|---------------------------------------|--|-------------------------|-------------------------|
| ATIS 128.5 | VALLEY APP CON 126.55 377.2 | MC ALLEN TOWER ★ 118.5 (CTAF) 0 256.9 | GND CON 121.8 | UNICOM 122.95 |
|----------------------|---------------------------------------|--|-------------------------|-------------------------|



| | |
|----------|-------------------|
| ELEV 107 | D TDZE 107 |
|----------|-------------------|

137°

81

TWR

2639 X 80

20.83° Up

36

7120 X 130

REIL Rwy 32

HIRL Rwy 14-32

MIRL Rwy 18-36

| CATEGORY | A | B | C | D |
|-------------------|---------|---------------|-----------------|-----------------|
| LPV DA | | 307-1/2 | 200 (200-1/2) | |
| LNAV/VNAV DA | | 418-1/2 | 311 (400-1/2) | |
| LNAV MDA | 520-1/2 | 413 (500-1/2) | 520-3/4 | 413 (500-3/4) |
| C CIRCLING | 580-1 | 473 (500-1) | 580-1 1/2 | 800-2 1/4 |
| | | | 473 (500-1 1/2) | 693 (700-2 1/4) |

SC-3, 11 JUL 2024 to 08 AUG 2024

SC-3, 11 JUL 2024 to 08 AUG 2024