


LOC I-AYS 108.3	APP CRS 184°	Rwy Idg 5992
		TDZE 140
		Apt Elev 141

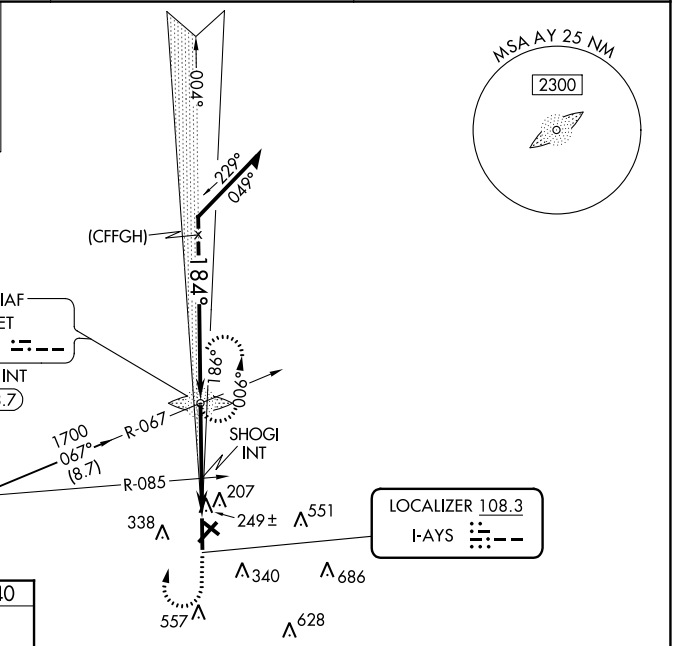
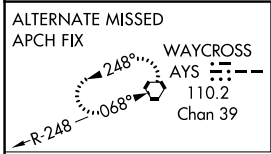
ILS Z or LOC Z RWY 19

WAYCROSS-WARE COUNTY (AYS)

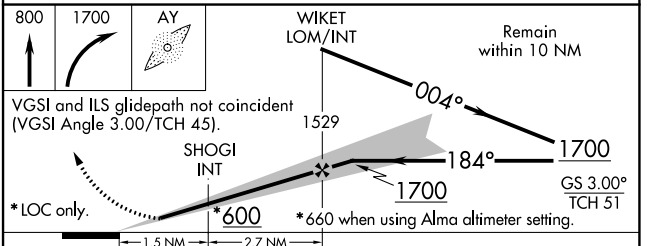
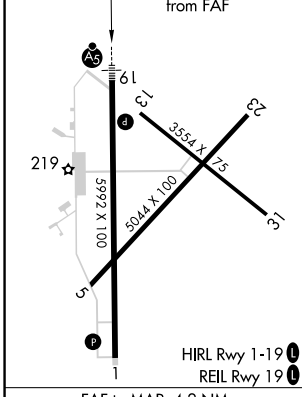
ADF Required. When local altimeter setting not received, use Alma altimeter setting: increase DA to 390 feet and all MDA 60 feet; increase S-LOC 19 Cat C/D visibility 1/8 mile; increase Circling Cat C/D visibility 1/4 mile. For inop MALS, increase S-LOC 19 Cat C/D visibility to 1 mile. For inop MALS, increase S-LOC 19 Cat C/D visibility to 1 mile. For inop MALS when using Alma altimeter setting, increase S-LOC 19 Cat C/D visibility to 1 1/8 mile. Increase SHOGI Fix Minimums S-LOC 19 Cat C/D visibility to 1/8 mile. Night Landing Rwy 5, 31 NA.



MALS  MISSED APPROACH: Climb to 800 then climbing right turn to 1700 direct WIKET LOM and hold.

AWOS-3 118.575	JACKSONVILLE CENTER 127.575 269.025	UNICOM 122.8 (CTAF) 
--------------------------	---	---



ELEV 141	TDZE 140
-----------------	-----------------



CATEGORY	A	B	C	D
S-ILS 19	340-1/2		200 (200-1/2)	
S-LOC 19	600-1/2	460 (500-1/2)	600-7/8	460 (500-7/8)
 CIRCLING	660-1 519 (600-1)	720-1 579 (600-1)	860-2 719 (800-2)	860-2 1/4 719 (800-2 1/4)
SHOGI FIX MINIMUMS (DUAL VOR RECEIVERS REQUIRED)				
S-LOC 19	500-1/2	360 (400-1/2)	500-3/8	360 (400-3/8)
 CIRCLING	660-1 519 (600-1)	720-1 579 (600-1)	860-2 719 (800-2)	860-2 1/4 719 (800-2 1/4)

SE-4, 11 JUL 2024 to 08 AUG 2024

SE-4, 11 JUL 2024 to 08 AUG 2024