

WAAS CH <b>53525</b> <b>W29A</b>	APP CRS <b>295°</b>	Rwy Idg TDZE Apt Elev	<b>6720</b> <b>33</b> <b>36</b>
--	------------------------	-----------------------------	---------------------------------------

# RNAV (GPS) RWY 29

GUSTAVUS(GST)(PAGS)

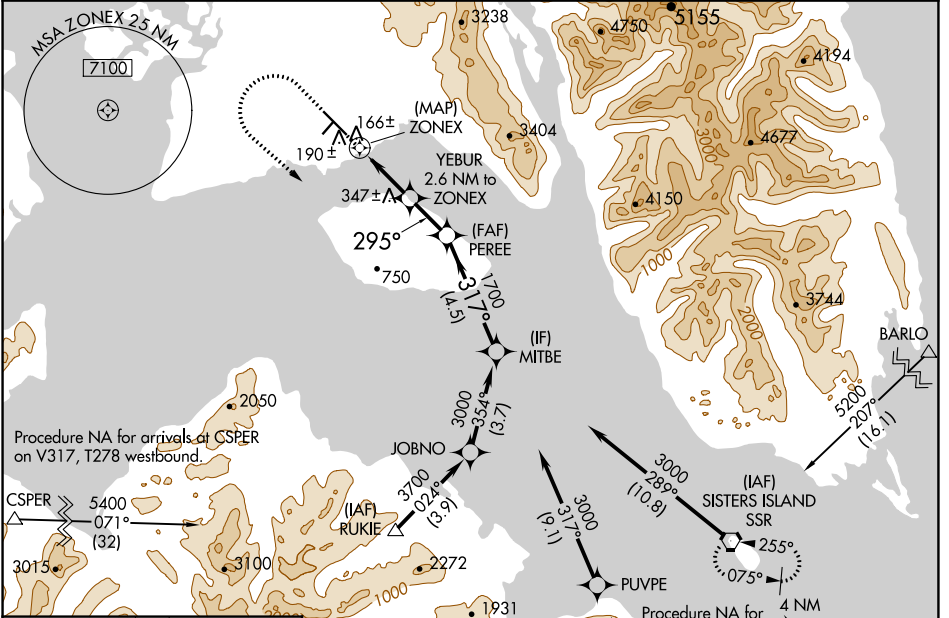
RNP APCH.

**⚠** Circling NA northeast of Rwy 11-29.  
Rwy 29 helicopter visibility reduction below 3/4 SM NA.

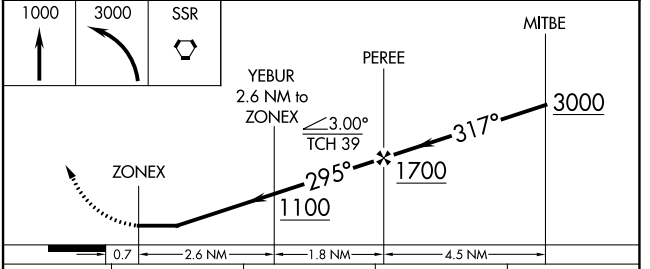
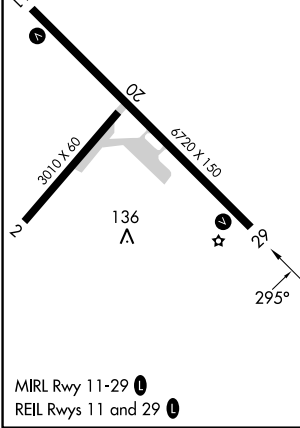
**❄** -18°C

MISSED APPROACH: (Do not exceed 210 KIAS until SSR VORTAC) Climb to 1000 then climbing left turn to 3000 direct SSR VORTAC and hold.

AWOS-3P <b>125.9</b>	ANCHORAGE CENTER <b>133.2 360.65</b>	JUNEAU RADIO <b>122.65</b>	CTAF <b>122.5</b>
-------------------------	---	-------------------------------	----------------------



ELEV 36	TDZE 33
---------	---------



CATEGORY		A	B	C	D
LP	MDA	420-1	387 (400-1)	420-1 1/8	387 (400-1 1/8)
LNAV	MDA	660-1	627 (700-1)	660-1 3/4	627 (700-1 3/4)
<b>C</b>	CIRCLING	660-1	624 (700-1)	960-2 3/4 924 (1000-2 3/4)	1200-3 1164 (1200-3)

AK, 11 JUL 2024 to 05 SEP 2024

AK, 11 JUL 2024 to 05 SEP 2024