

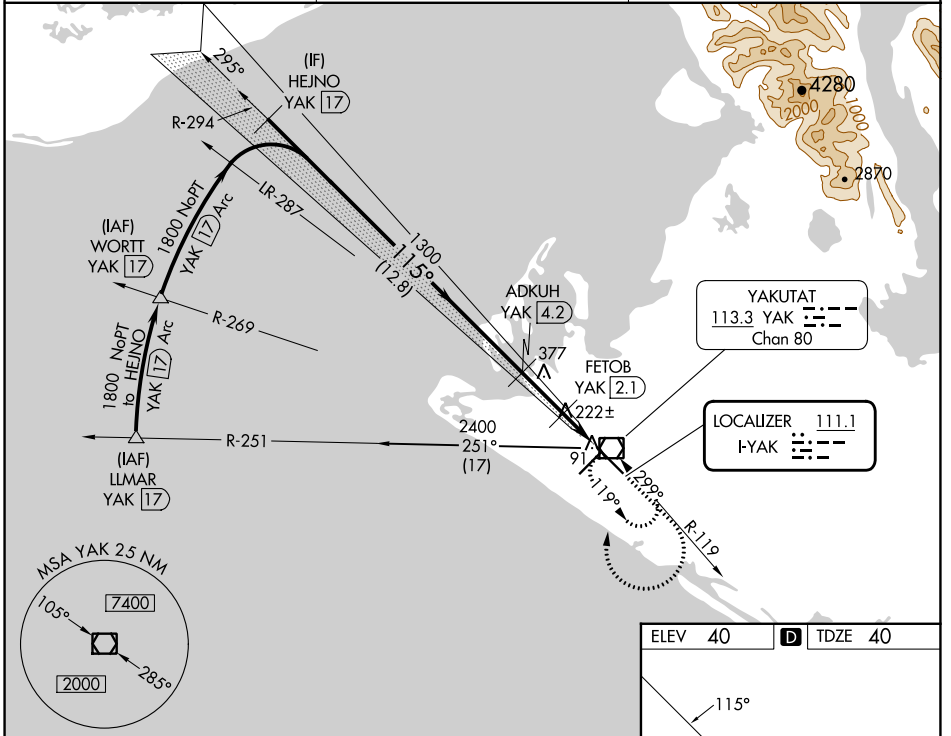
LOC I-YAK <b>111.1</b>	APP CRS <b>115°</b>	Rwy Idg <b>7732</b>
		TDZE <b>40</b>
		Apt Elev <b>40</b>

# ILS or LOC RWY 11

YAKUTAT (YAK) (PAYA)

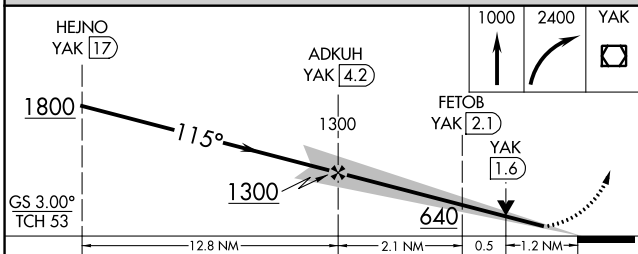
DME required.	MALSR	MISSED APPROACH: Climb to 1000 then climbing right turn to 2400 direct YAK VOR/DME and hold, continue climb-in-hold to 2400.
<p><b>▼</b> Circling Rwy 20 NA at night. When Yakutat altimeter setting not received, procedure NA. DME from YAK VOR/DME. DME use requires simultaneous reception of I-YAK and YAK DME.</p> <p><b>▲</b></p>		

ASOS <b>135.75</b>	ANCHORAGE CENTER <b>119.0 263.1</b>	JUNEAU RADIO <b>123.6 (CTAF) 0</b>
-----------------------	--	---------------------------------------

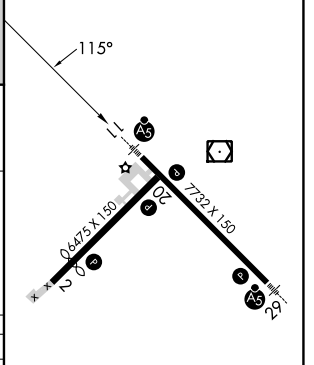


AK, 11 JUL 2024 to 05 SEP 2024

AK, 11 JUL 2024 to 05 SEP 2024



ELEV 40	<b>D</b> TDZE 40
---------	------------------



CATEGORY	A	B	C	D
S-ILS 11	240/24 200 (200-½)			
S-LOC 11	480/24	440 (500-½)	480/40	440 (500-¾)
<b>C</b> CIRCLING	520-1 480 (500-1)	540-1 500 (500-1)	820-2¼ 780 (800-2¼)	820-2½ 780 (800-2½)

REIL Rws 2 and 20	<b>0</b>
HIRL Rws 2-20 and 11-29	<b>0</b>
FAF to MAP 3.6 NM	
Knots	60 90 120 150 180
Min:Sec	3:36 2:24 1:48 1:26 1:12