

VOR/DME YAK 113.3 Chan 80	APP CRS 308°	Rwy Idg 7732 TDZE 26 Apt Elev 33
--	------------------------	---

VOR/DME RWY 29

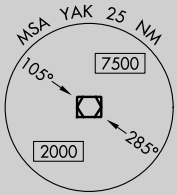
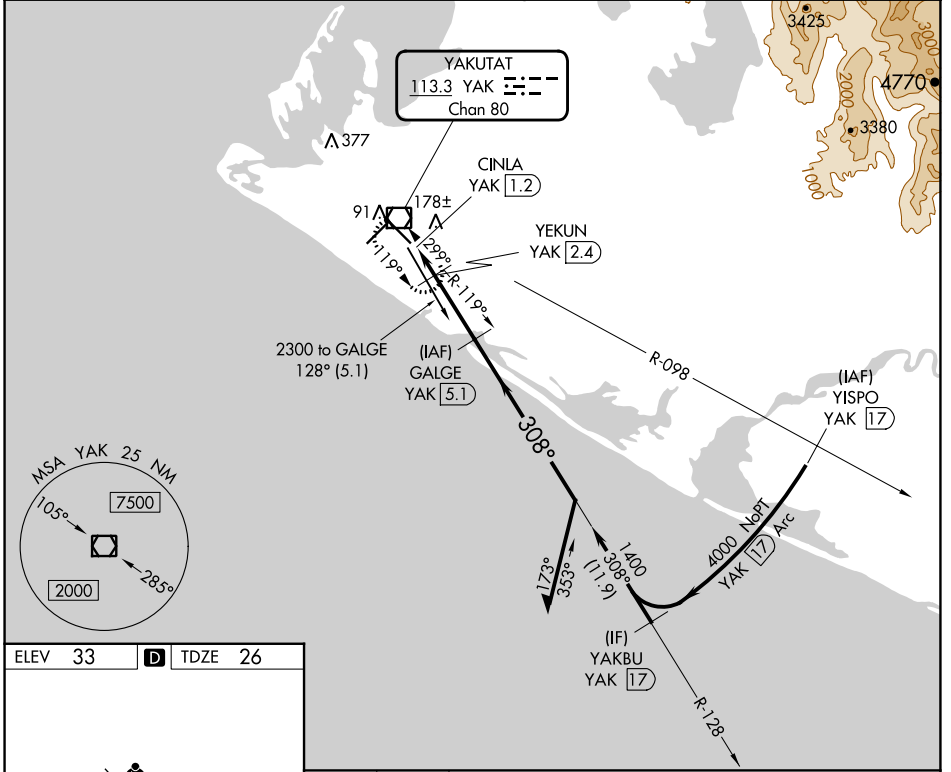
YAKUTAT (YAK) (PAYA)

⚠ Inop table does not apply to Cats A/B.
⚠ For inop MALSR, increase Cats C/D visibility to 1½ mile.

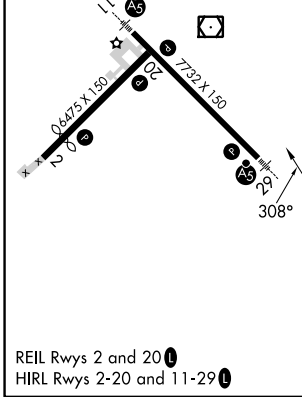
MALSR

MISSED APPROACH: Climb to 2000 direct YAK
 VOR/DME and hold, continue climb-in-hold to 2000.

ASOS 135.75	ANCHORAGE CENTER 119.0 263.1	JUNEAU RADIO 123.6 (CTAF) 0
-----------------------	--	--



ELEV 33	D	TDZE 26
---------	----------	---------



2000	YAK	VGSI and descent angles not coincident (VGSI Angle 3.00/TCH 51).	Remain within 10 NM	
YAK VOR/DME	CINLA YAK 1.2	YEKUN YAK 2.4	GALGE YAK 5.1	
540	1400	128°	1800	
0.3	1.2 NM	2.7 NM		
CATEGORY	A	B	C	D
S-29	440-1 414 (500-1)			
C CIRCLING	500-1 467 (500-1)	520-1 487 (500-1)	620-1½ 587 (600-1½)	720-2¼ 687 (700-2¼)

AK, 11 JUL 2024 to 05 SEP 2024

AK, 11 JUL 2024 to 05 SEP 2024