

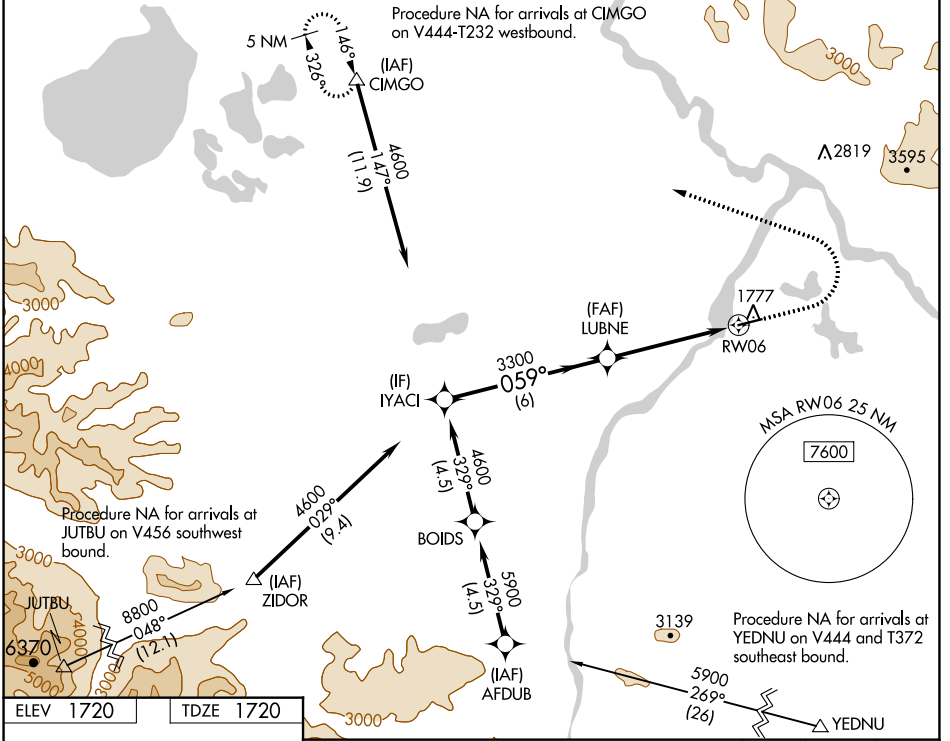
WAAS CH 65646 W06A	APP CRS 059°	Rwy Idg TDZE Apt Elev	5100 1720 1720
--	------------------------	-----------------------------	---

RNAV (GPS) RWY 6

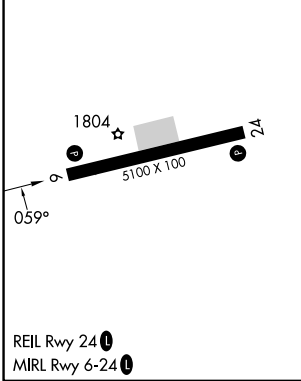
NORTHWAY (ORT)(PAOR)

RNP APCH - GPS.	MISSED APPROACH: Climb to 2200 then climbing left turn to 4800 direct CIMGO and hold.
Rwy 6 helicopter visibility reduction below 3/4 SM NA. -38°C For uncompensated Baro-VNAV systems, LNAV/VNAV NA below -23°C or above 54°C.	

ASOS 135.4	ANCHORAGE CENTER 126.55 323.0	NORTHWAY RADIO 123.6 (CTAF) 0
----------------------	---	---



ELEV 1720	TDZE 1720
-----------	-----------



REIL Rwy 24
MIRL Rwy 6-24

YACI	LUBNE	2200	4800	CIMGO
4600	3300	↑	↶	△
GP 3.00°				
TCH 39				
	6 NM	3.5 NM	1.3 NM	1.3 NM to RWY 6
CATEGORY	A	B	C	D
LPV DA	1974-3/4 254 (300-3/4)			
LNAV/VNAV DA	2030-7/8 310 (400-7/8)			
LNAV MDA	2180-1	460 (500-1)	2180-1 3/8	460 (500-1 3/8)
CIRCLING	2180-1	460 (500-1)	2240-1 1/2	2340-2
			520 (600-1 1/2)	620 (700-2)

AK, 11 JUL 2024 to 05 SEP 2024

AK, 11 JUL 2024 to 05 SEP 2024