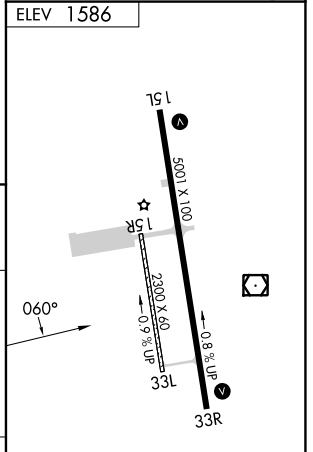
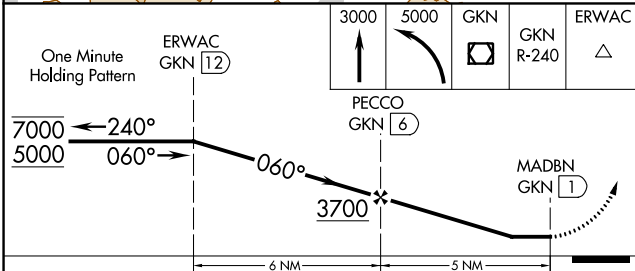
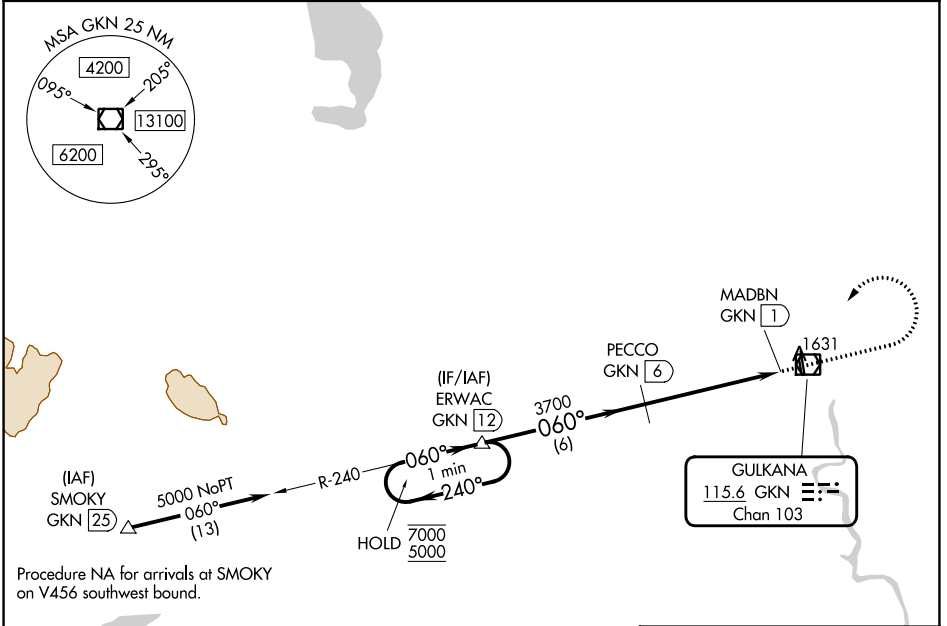


VOR/DME GKN 115.6 Chan 103	APP CRS 060°	Rwy Idg TDZE Apt Elev 1586	N/A N/A
--	------------------------	---	--------------------------

VOR-A
GULKANA (GKN) (PAGK)

DME required.	MISSED APPROACH: Climb to 3000 then climbing left turn to 5000 direct GKN VOR/DME and continue on GKN R-240 to ERWAC/GKN 12 DME and hold.
<p>⚠ Circling to Rwy 15R, Rwy 33L NA at night. Rwy 15R, 33L helicopter visibility reduction below 1 SM NA.</p>	

ASOS 134.85	ANCHORAGE CENTER 119.5 317.5	CTAF 122.9
-----------------------	--	----------------------



CATEGORY	A	B	C	D
Ⓢ CIRCLING	2060-1 474 (500-1)	2080-1 494 (500-1)	2080-1½ 494 (500-1½)	2200-2 614 (700-2)

MIRL Rwy 15L-33R

AK, 11 JUL 2024 to 05 SEP 2024

AK, 11 JUL 2024 to 05 SEP 2024