

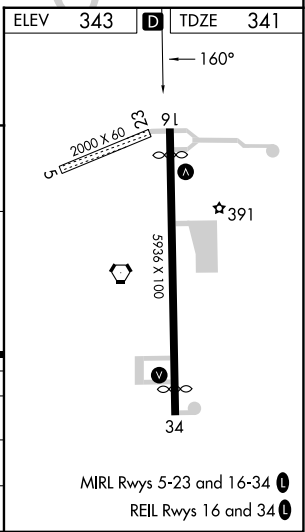
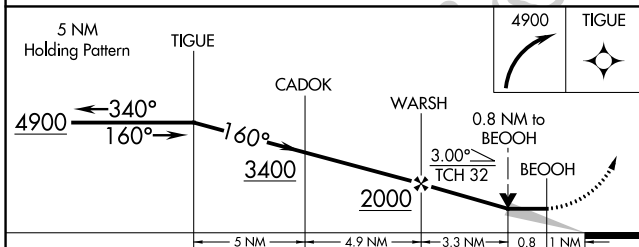
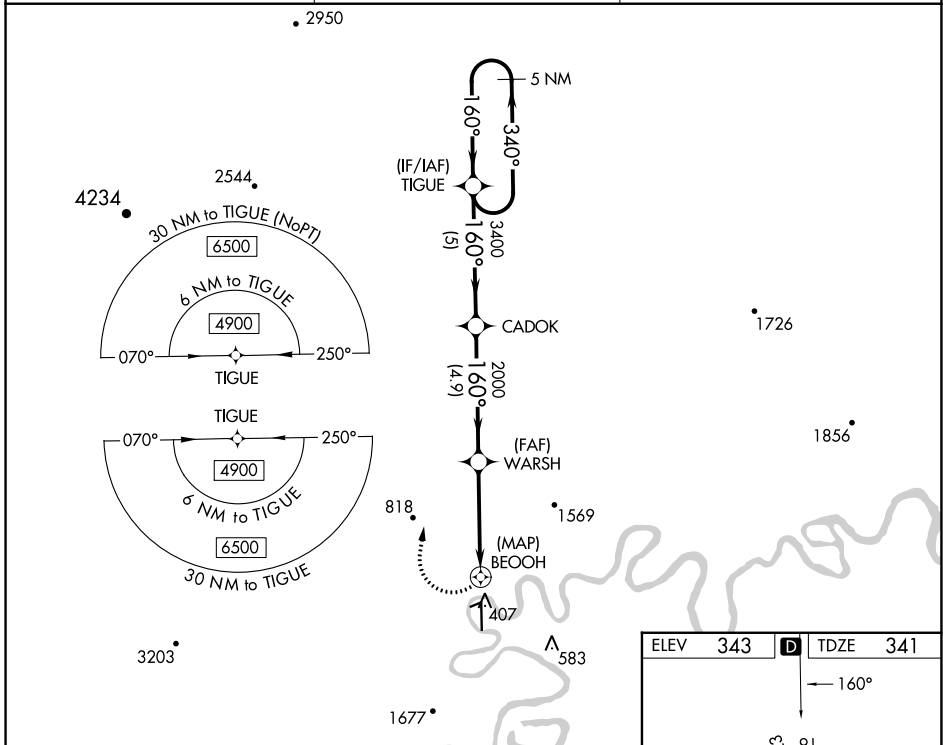
WAAS CH 90226 W16A	APP CRS 160°	Rwy Idg 4843 TDZE 341 Apt Elev 343
--	------------------------	---

RNAV (GPS) RWY 16

MC GRATH (MCG) (PAMC)

RNP APCH-GPS.	MISSED APPROACH: Climbing right turn to 4900 direct TIGUE and hold, continue climb-in-hold to 4900.
<p>Circling NA for Cat D west of Rwy 16-34. -46°C</p>	

ASOS 135.65	ANCHORAGE CENTER 128.1 353.8	MCGRATH RADIO 123.6 (CTAF)
-----------------------	--	--------------------------------------



CATEGORY	A	B	C	D
LP MDA	960-1¼	619 (700-1¼)	960-1¾	619 (700-1¾)
LNAV MDA	960-1¼	619 (700-1¼)	960-1¾	619 (700-1¾)
CIRCLING	960-1¼	617 (700-1¼)	1460-3 1117 (1200-3)	1620-3 1277 (1300-3)

AK, 11 JUL 2024 to 05 SEP 2024

AK, 11 JUL 2024 to 05 SEP 2024