

LOC/DME I-OME 108.7 Chan 24	APP CRS 099°	Rwy Idg 6009 TDZE 16 Apt Elev 38
---	------------------------	---

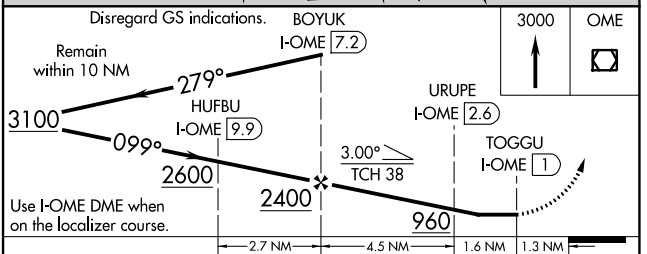
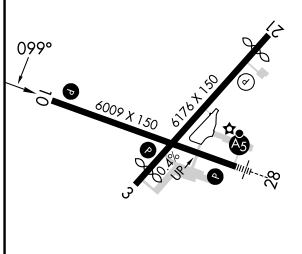
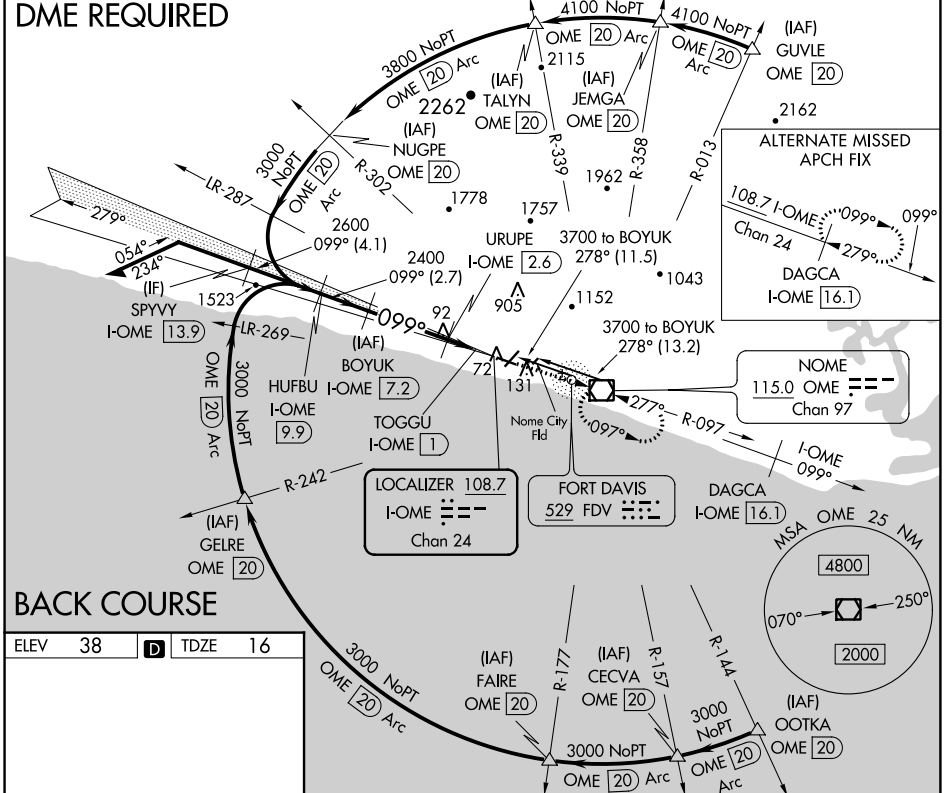
LOC/DME BC RWY 10

NOME (OME) (PAOM)

LOC BC unusable inside TOGGU/I-OME 1 DME. Night landing: Rwy 10 operational VGSi required, remain on or above VGSi glidepath until threshold. Night landing: Rwy 21 NA. Circling NA for Cats C and D north of Rwy 10-28.

MISSED APPROACH: Climb to 3000 direct OME VOR/DME and hold, continue climb-in-hold to 3000.

AFIS 119.925	ANCHORAGE CENTER 133.3 290.4	NOME RADIO 123.6 (CTAF)
------------------------	--	-----------------------------------



CATEGORY	A	B	C	D
S-10		340-1½	324 (400-1½)	
C CIRCLING		540-1½	502 (600-1½)	700-2 662 (700-2)

NOME, ALASKA
Amdt 4 13NOV14

64°31'N-165°27'W

LOC/DME BC RWY 10

NOME (OME) (PAOM)

AK, 11 JUL 2024 to 05 SEP 2024

AK, 11 JUL 2024 to 05 SEP 2024