

HI-ILS Y or LOC Y RWY 20R

LOC/DME I-FAI 110.3 Chan 40	APCH CRS 203°	Rwy ldg 11,050 TDZE 439 Arprt Elev 439
---	-------------------------	---

[USAF]

FAIRBANKS INTL (PAFA)

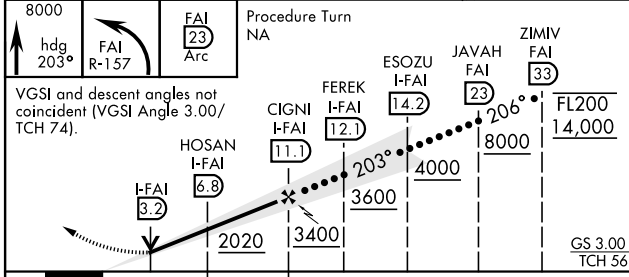
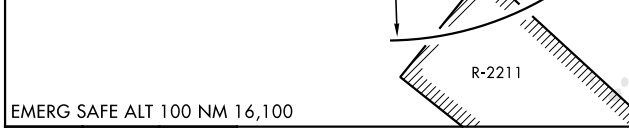
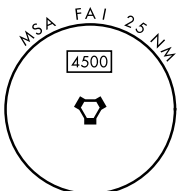
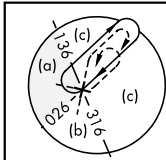
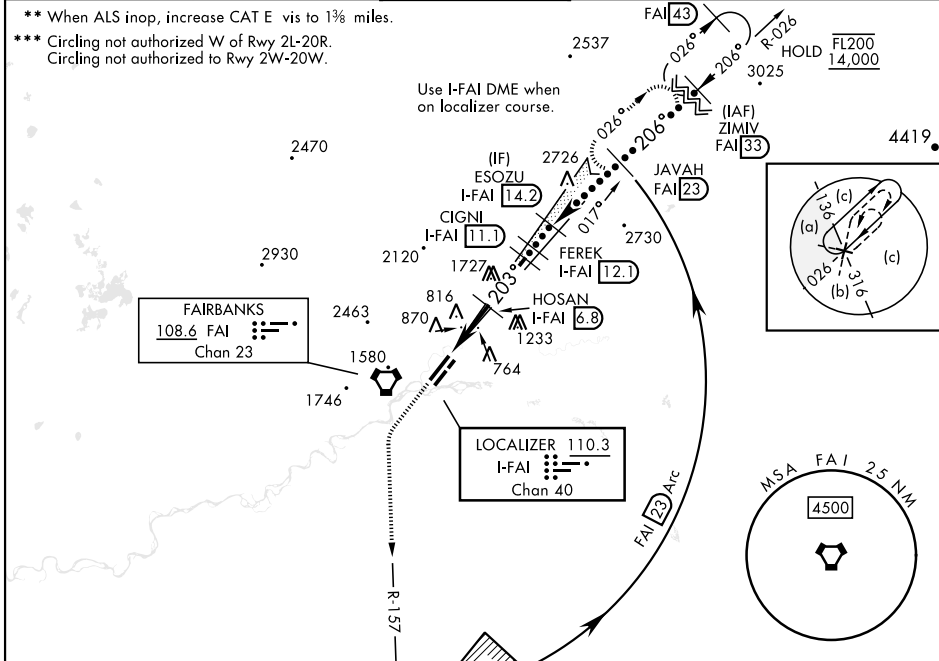
DME required for procedure entry.



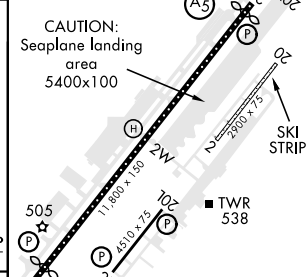
MISSED APPROACH: Climb to 8000 on heading 203° and FAI VORTAC R-157 to 23 DME, arc northbound to JAVAH/FAI VORTAC 23 DME and hold.

* When ALS inop, increase CAT E RVR to 40 and vis to 3/4 mile.
 ** When ALS inop, increase CAT E vis to 1 3/8 miles.
 *** Circling not authorized W of Rwy 2L-20R.
 Circling not authorized to Rwy 2W-20W.

ATIS 124.4	APP CON 125.35 363.2	TOWER 118.3 257.8	GND CON 121.9	CLNC DEL 127.6
----------------------	--------------------------------	-----------------------------	-------------------------	--------------------------



ELEV 439	TDZE 439
REIL Rwy 20L	492
TDZL/CL Rwy 2L	520±
MIRL Rwy 2R-20L	
HIRL Rwy 2L-20R	



CATEGORY	C	D	E
S-ILS 20R**	639/24	200 (200-1/2)	
S-LOC 20R**	880/45	441 (500-7/8)	
CIRCLING***	900-1 1/2 461 (500-1 1/2)	1020-2 581 (600-2)	1060-2 1/4 621 (700-2 1/4)

Rwy 2L ldg 11,050'
Rwy 20R ldg 11,050'

HI-ILS Y or LOC Y RWY 20R

AK, 11 JUL 2024 to 05 SEP 2024

AK, 11 JUL 2024 to 05 SEP 2024