

(MKNLY4.TKA) 23278

MCKINLEY FOUR DEPARTURE

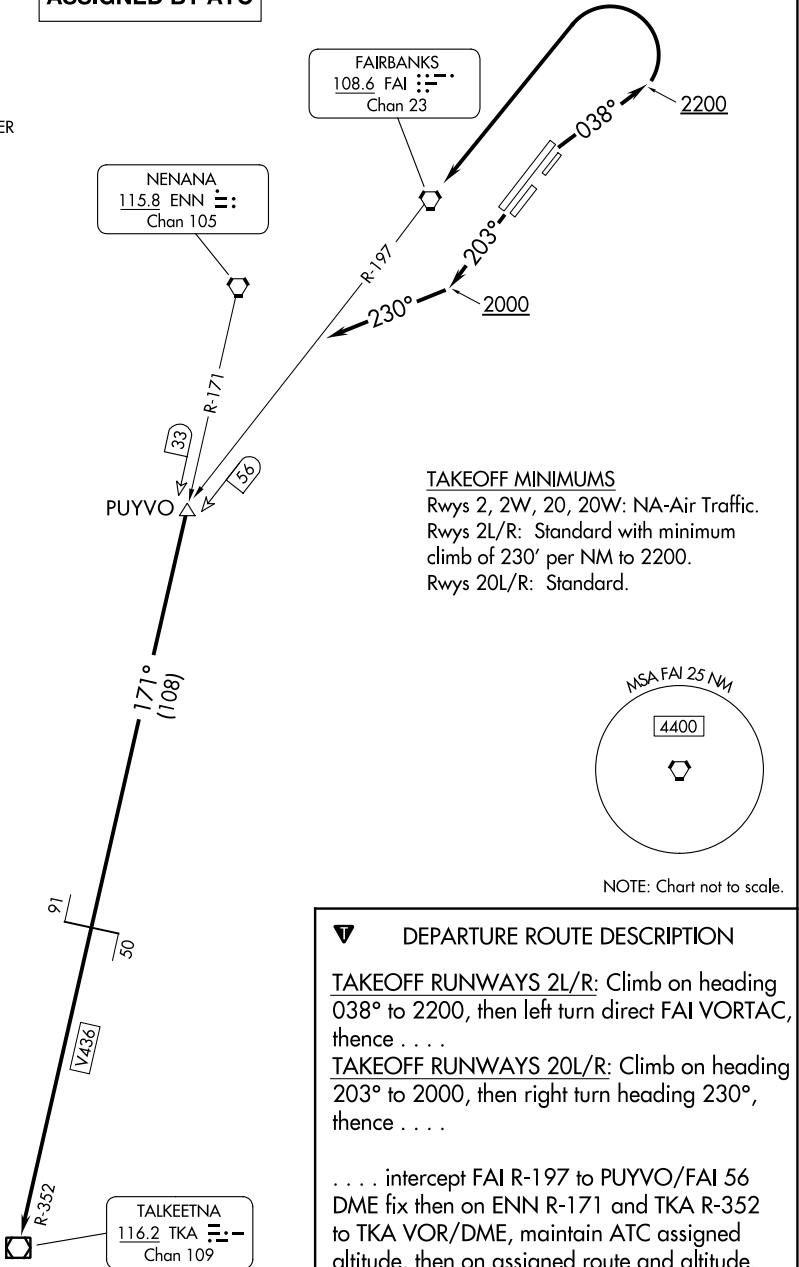
AL-1234 (FAA)

FAIRBANKS INTL (FAI) (PAFA)
FAIRBANKS, ALASKA

FAIRBANKS DEP CON
125.35 363.2
ATIS
124.4
CLNC DEL
127.6
GND CON
121.9
FAIRBANKS TOWER
118.3 257.8

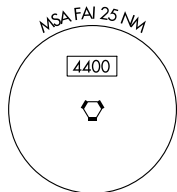
**TOP ALTITUDE:
ASSIGNED BY ATC**

RADAR required. DME required.



TAKEOFF MINIMUMS

Rwys 2, 2W, 20, 20W: NA-Air Traffic.
Rwys 2L/R: Standard with minimum
climb of 230' per NM to 2200.
Rwys 20L/R: Standard.



NOTE: Chart not to scale.

DEPARTURE ROUTE DESCRIPTION

TAKEOFF RUNWAYS 2L/R: Climb on heading 038° to 2200, then left turn direct FAI VORTAC, thence

TAKEOFF RUNWAYS 20L/R: Climb on heading 203° to 2000, then right turn heading 230°, thence

. . . . intercept FAI R-197 to PUYVO/FAI 56 DME fix then on ENN R-171 and TKA R-352 to TKA VOR/DME, maintain ATC assigned altitude, then on assigned route and altitude.

AK, 11 JUL 2024 to 05 SEP 2024

AK, 11 JUL 2024 to 05 SEP 2024

MCKINLEY FOUR DEPARTURE

(MKNLY4.TKA) 10AUG23

FAIRBANKS, ALASKA
FAIRBANKS INTL (FAI) (PAFA)