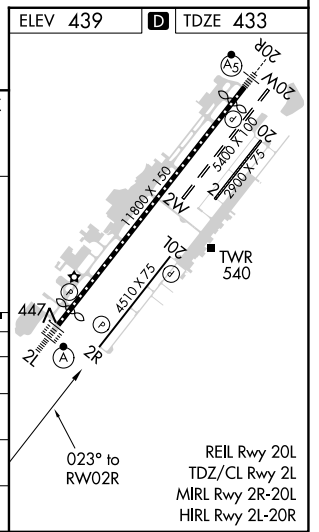
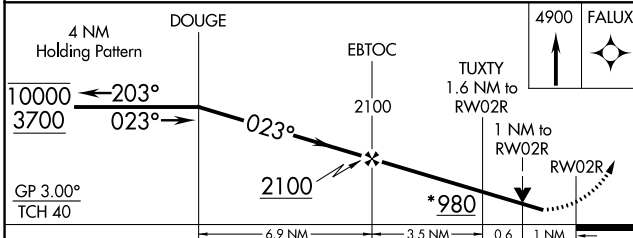
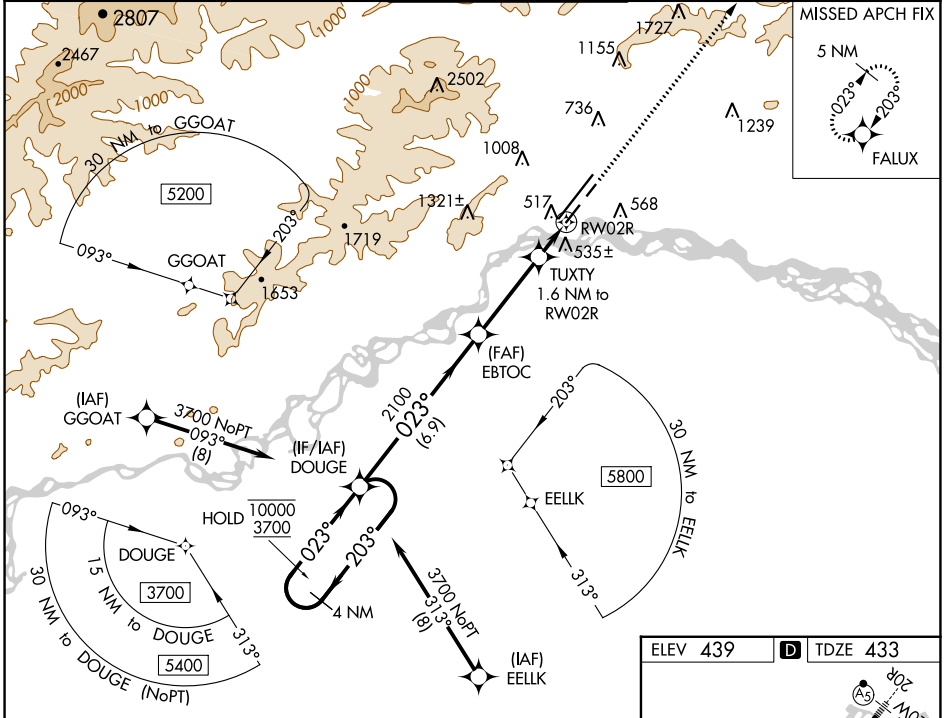


WAAS CH 53612 W02A	APP CRS 023°	Rwy ldg 4510 TDZE 433 Apt Elev 439
--	------------------------	---

RNAV (GPS) RWY 2R

FAIRBANKS INTL (FAI) (PAFA)

RNP APCH - GPS.		FAIRBANKS TOWER 118.3 257.8		GND CON 121.9	CLNC DEL 127.6
<p>⚠ Circling NA west of Rwy 2L-20R. Circling NA to Rws 2W and 20W. ⚠ -32°C Rwy 2R helicopter visibility reduction below ¾ SM NA. For uncompensated Baro-VNAV systems, LNAV/VNAV NA below -21°C or above 54°C.</p>		<p>MISSED APPROACH: Climb to 4900 direct FALUX and hold, continue climb-in-hold to 4900.</p>			



CATEGORY	A	B	C	D
LPV DA		683-7/8	250 (300-7/8)	
LNAV/ VNAV DA		731-1	298 (300-1)	
LNAV MDA		800-1	367 (400-1)	
C CIRCLING	880-1 441 (500-1)	900-1 461 (500-1)	900-1½ 461 (500-1½)	1020-2 581 (600-2)

AK, 11 JUL 2024 to 05 SEP 2024

AK, 11 JUL 2024 to 05 SEP 2024