

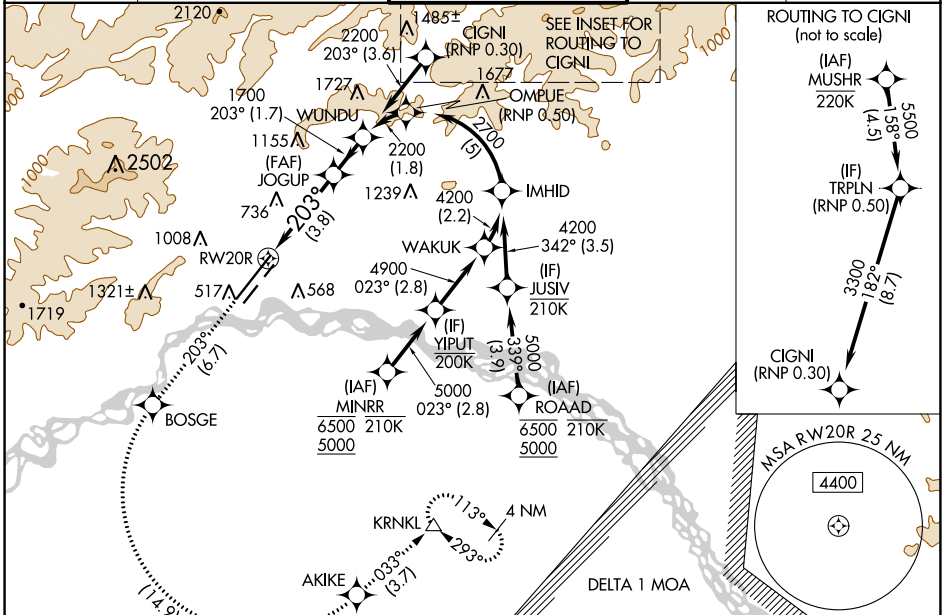
APP CRS	Rwy ldg 11050
203°	TDZE 439
	Apt Elev 439

RNAV (RNP) Z RWY 20R

FAIRBANKS INTL (FAI) (PAFA)

RNP AR APCH - GPS.	MALSR	MISSED APPROACH: Climb to 4000 on track 203° to BOSGE then left turn to AKIKE then on track 033° to KRNLK and hold.
-32°C For uncompensated Baro-VNAV systems, procedure NA below -18°C or above 54°C. For inop ALS, increase RNP 0.30 all Cats visibility to 1 1/2 SM.		

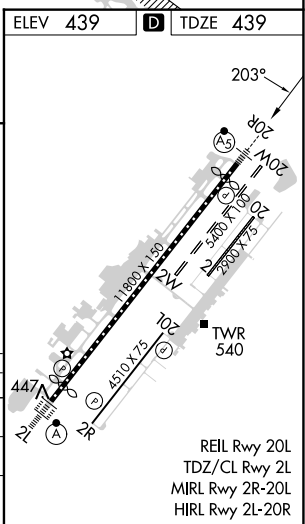
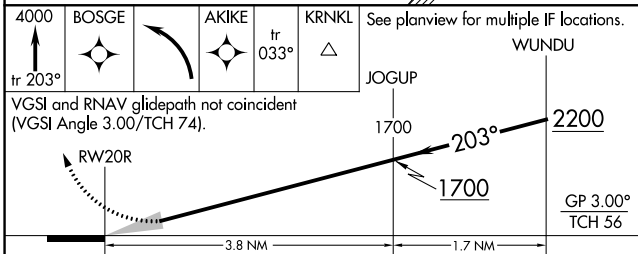
ATIS	FAIRBANKS APP CON	FAIRBANKS TOWER	GND CON	CLNC DEL
124.4	125.35 363.2	118.3 257.8	121.9	127.6



AK, 11 JUL 2024 to 05 SEP 2024

AK, 11 JUL 2024 to 05 SEP 2024

ELEV 439	TDZE 439
----------	----------



CATEGORY	A	B	C	D
RNP 0.10 DA		763/26	324 (400-1/2)	
RNP 0.30 DA		923/50	484 (500-1)	

AUTHORIZATION REQUIRED