

20366

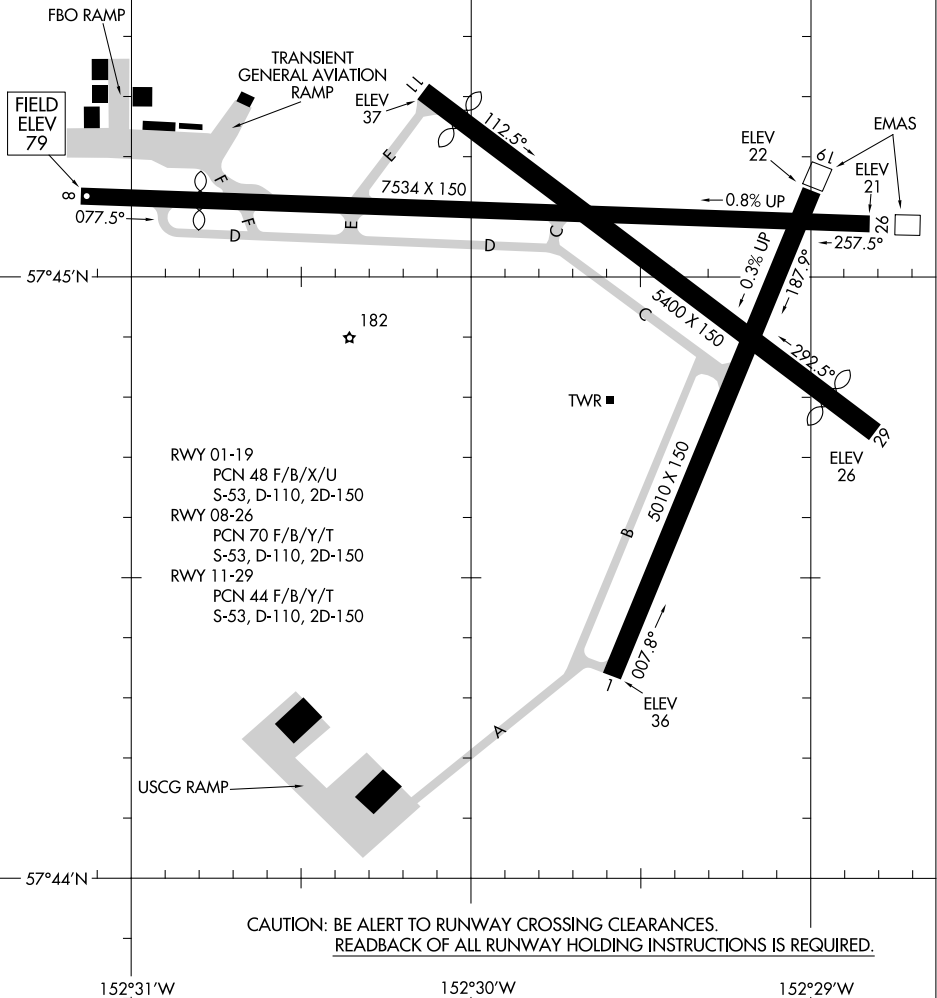
# AIRPORT DIAGRAM

AL-1238 (FAA)

KODIAK (ADQ)(PADQ)  
KODIAK, ALASKA

ATIS  
 134.45  
 KODIAK TOWER ★  
 119.8 239.0  
 GND CON  
 121.9  
**D**

VAR 14.5° E  
 JANUARY 2020  
 ANNUAL RATE OF CHANGE  
 0.2° W



RWY 01-19  
 PCN 48 F/B/X/U  
 S-53, D-110, 2D-150  
 RWY 08-26  
 PCN 70 F/B/Y/T  
 S-53, D-110, 2D-150  
 RWY 11-29  
 PCN 44 F/B/Y/T  
 S-53, D-110, 2D-150

CAUTION: BE ALERT TO RUNWAY CROSSING CLEARANCES.  
 READBACK OF ALL RUNWAY HOLDING INSTRUCTIONS IS REQUIRED.

AK, 11 JUL 2024 to 05 SEP 2024

AK, 11 JUL 2024 to 05 SEP 2024

# AIRPORT DIAGRAM

20366

KODIAK, ALASKA  
KODIAK (ADQ)(PADQ)