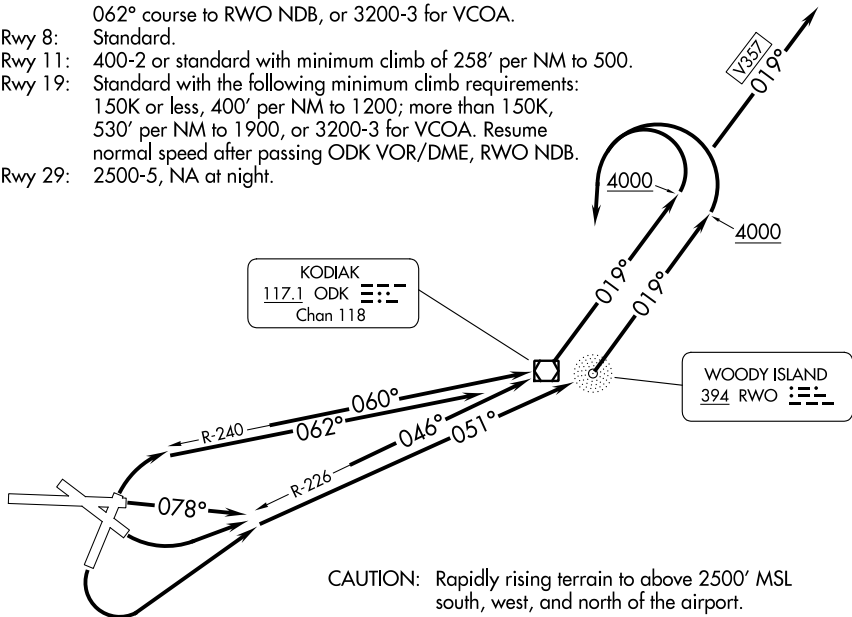


KODIAK SEVEN DEPARTURE (OBSTACLE)

TAKEOFF MINIMUMS:

- Rwy 26: NA - Terrain.
- Rwy 1: 1100-2 with a minimum climb of 445' per NM to 400, maintain 210K or less until established on the ODK R-240 or 062° course to RWO NDB, or 3200-3 for VCOA.
- Rwy 8: Standard.
- Rwy 11: 400-2 or standard with minimum climb of 258' per NM to 500.
- Rwy 19: Standard with the following minimum climb requirements: 150K or less, 400' per NM to 1200; more than 150K, 530' per NM to 1900, or 3200-3 for VCOA. Resume normal speed after passing ODK VOR/DME, RWO NDB.
- Rwy 29: 2500-5, NA at night.

GND CON 121.9
 KODIAK TOWER* 119.8 (CTAF) 239.0



CAUTION: Rapidly rising terrain to above 2500' MSL south, west, and north of the airport.

TAKEOFF OBSTACLE NOTES:

- Rwy 1: Vehicles beginning 28' from DER, 147' right of centerline, up to 15' AGL/50' MSL. Vehicles beginning 56' from DER, 13' left of centerline, up to 15' AGL/50' MSL.
- Rwy 8: Vehicles beginning 37' from DER, left and right of centerline, 15' AGL/50' MSL. Trees and vegetation beginning 25' from DER, left and right of centerline, up to 15' AGL/23' MSL. Ships beginning 2400' from DER, left and right of centerline, up to 35' AGL/35' MSL.
- Rwy 11: Tree 10' from DER, 411' right of centerline, 38' AGL/64' MSL. Tree 78' from DER, 330' right of centerline, 23' AGL/49' MSL. Vegetation 132' from DER, 469' right of centerline, 17' AGL/43' MSL. Ships beginning 3564' from DER, left and right of centerline, 210' AGL/210' MSL. Tree 1.7 NM from DER, 2679' right of centerline, up to 100' AGL/360' MSL.
- Rwy 19: Vehicles beginning 5' from DER, left and right of centerline, up to 15' AGL/59' MSL. Trees and bushes beginning 31' from DER, 490' right of centerline, up to 50' AGL/84' MSL. Building 1682' from DER, 608' right of centerline, 51' AGL/103' MSL. Trees beginning 2183' from DER, left and right of centerline, up to 100' AGL/133' MSL. Trees beginning 3355' from DER, left and right of centerline, up to 100' AGL/169' MSL.
- Rwy 29: Trees beginning 13' from DER, 370' right of centerline, up to 39' AGL/76' MSL. Vehicles 160' from DER, 486' left of centerline, up to 15' AGL/73' MSL. Trees, bushes, and terrain beginning 184' from DER, 123' left of centerline, up to 100' AGL/185' MSL. Trees, vehicle, bushes, and terrain beginning 130' from DER, right of centerline, up to 100' AGL/268' MSL.

(CONTINUED ON FOLLOWING PAGE)

NOTE: Chart not to scale.

KODIAK SEVEN DEPARTURE (OBSTACLE)