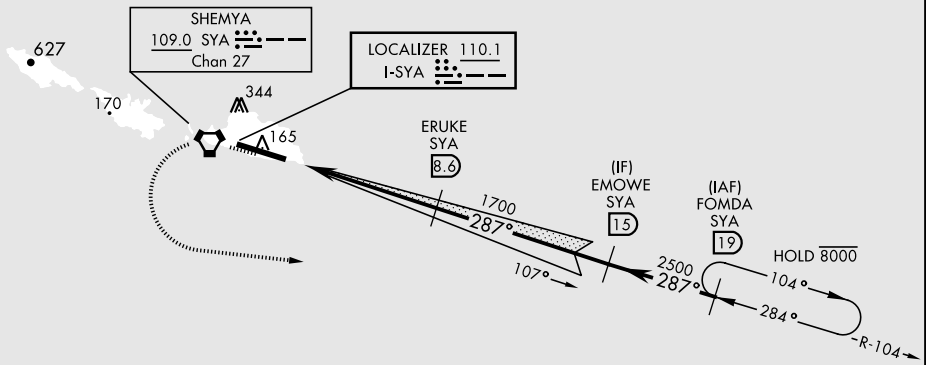
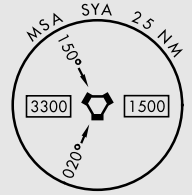


ILS or LOC/DME RWY 28

LOC I-SYA 110.1	APCH CRS 287°	Rwy ldg 10,004 TDZE 88 Arprt Elev 98	AL-1246 [USAF]	EARECKSON AS (PASY)
* When ALS inop, increase CAT CDE vis to 1 1/8 miles. ** Circling Not Authorized in area N of Rwy 10-28.			SALS 	MISSED APPROACH: Climb to 600, then climbing left turn to 3000, intercept SYA R-104 direct FOMDA and hold.
ANCHORAGE CENTER 119.1 339.8			CTAF 127.2 352.05 0	

CAUTION: Numerous obstructions in area N of Rwy 10-28.
 Missed approach requires use of RNAV or ATC RADAR monitoring.



EMERG SAFE ALT 100 NM 5400

600	3000	VGSI and ILS Glidepath not coincident (VGSI angle 2.50/TCH 46).	ELEV 98	TDZE 88	
CATEGORY	A	B	C	D	E
S-ILS 28	288-1		200	(200-1)	
S-LOC 28*	500-1		412	(500-1)	
CIRCLING**	500-1 402 (500-1)	560-1 462 (500-1)	560-1 1/2 462 (500-1 1/2)	660-2 562 (600-2)	680-2 582 (600-2)
					HIRL Rwy 10-28 0 REIL Rwy 10 and 28

ILS or LOC/DME RWY 28

AK, 11 JUL 2024 to 05 SEP 2024

AK, 11 JUL 2024 to 05 SEP 2024