

SHEMYA I, ALEUTIAN I, ALASKA

RNAV (GPS) RWY 10

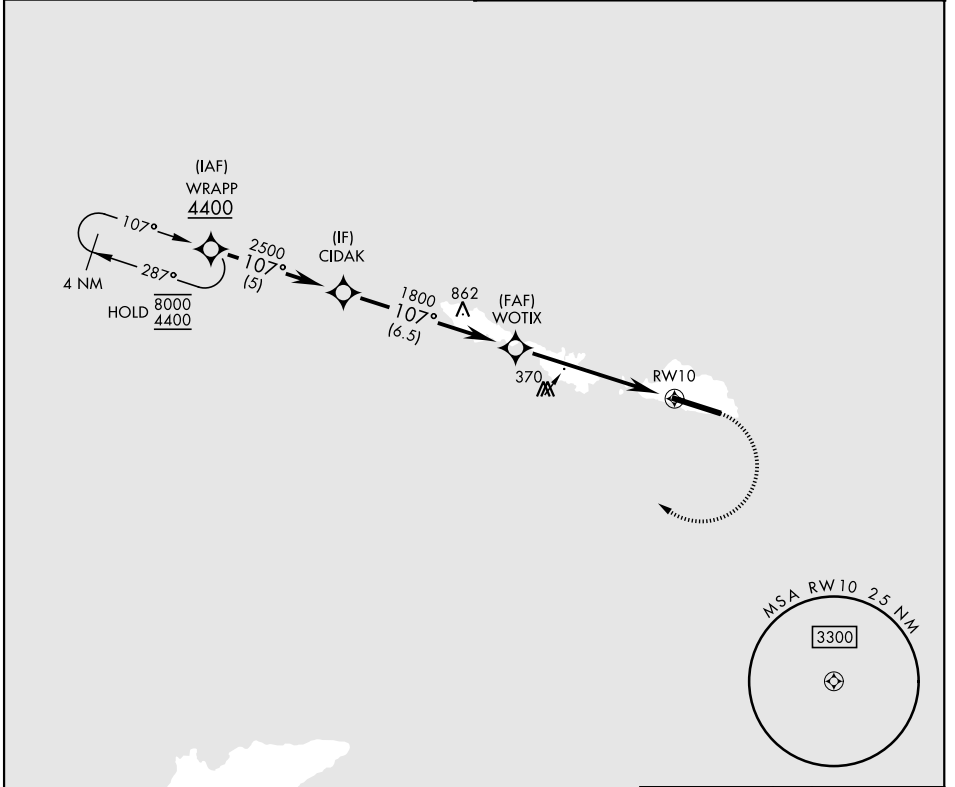
APCH CRS	Rwy Idg 10,004
107°	TDZE 98
	Arprt Elev 98

AL-1246 [USAF]

EARECKSON AS (PASY)

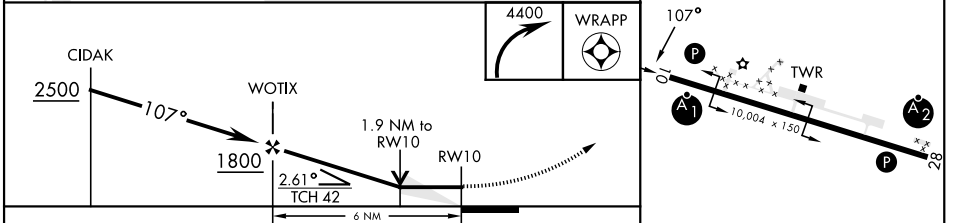
RNP APCH	ALSIF-1	MISSED APPROACH: Climbing right turn to 4400 direct WRAPP and hold, continue climb-in-hold to 4400.
*When ALS inop, increase CAT CDE vis to 1½ miles. **Circling NA N of Rwy 10-28.		

ANCHORAGE CENTER 119.1 339.8	CTAF 127.2 352.05
--	-----------------------------



ELEV 98	TDZE 98
---------	---------

EMERG SAFE ALT 100 NM 4400



CATEGORY	A	B	C	D	E
LNAV MDA *	640-1	542 (600-1)	640-1½	542 (600-1½)	
CIRCLING **	640-1	542 (600-1)	640-1½	660-2	680-2
			542 (600-1½)	562 (600-2)	582 (600-2)

HIRL Rwy 10-28
REIL Rwy 10 and 28

SHEMYA I, ALEUTIAN I, ALASKA
Orig 02DEC21

52° 43' N-174° 07' E

EARECKSON AS (PASY)

RNAV (GPS) RWY 10

AK, 11 JUL 2024 to 05 SEP 2024

AK, 11 JUL 2024 to 05 SEP 2024