

RNAV (GPS) RWY 28

APCH CRS	Rwy Idg 10,004
287°	TDZE 88
	Arpt Elev 98

AL-1246 [USAF]

EARECKSON AS (PASY)

RNP APCH

SALS

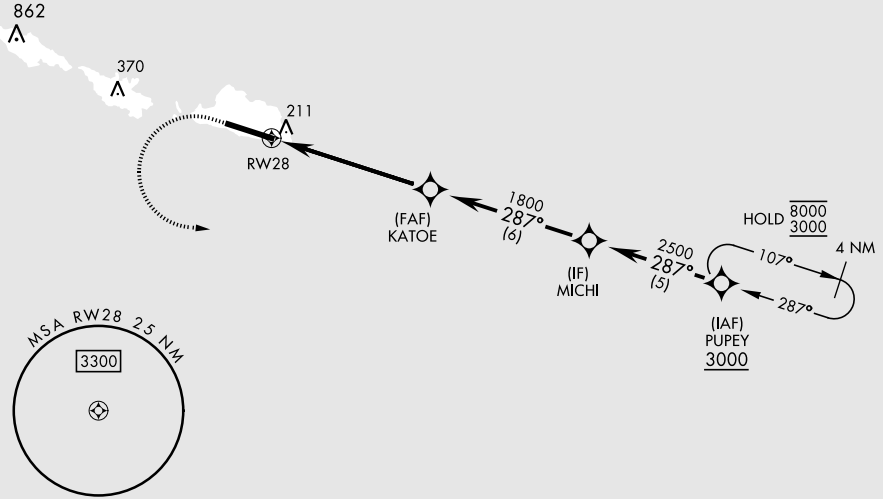


MISSED APPROACH: Climb to 600, then climbing left turn to 3000, direct PUPEY and hold.

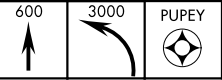
* When ALS inop, increase CAT CDE vis to 1 1/2 miles.
** Circling NA N of Rwy 10-28.

ANCHORAGE CENTER
119.1 339.8

CTAF
127.2 352.05 0

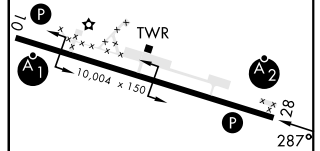
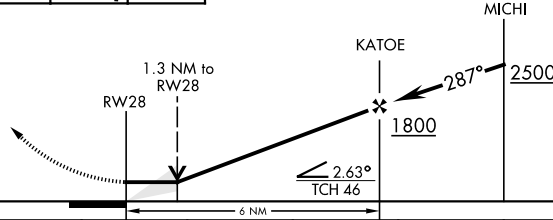


EMERG SAFE ALT 100 NM 4400



ELEV 98

TDZE 88



CATEGORY	A	B	C	D	E
LNAV MDA*	480-1		392	(400-1)	
CIRCLING**	480-1 382 (400-1)	560-1 462 (500-1)	560-1 1/2 462 (500-1 1/2)	660-2 562 (600-2)	680-2 582 (600-2)

HIRL Rwy 10-28 0
REIL Rwy 10 and 28

RNAV (GPS) RWY 28

AK, 11 JUL 2024 to 05 SEP 2024

AK, 11 JUL 2024 to 05 SEP 2024