

SHEMYA I, ALEUTIAN I, ALASKA

VOR/DME or TACAN RWY 10

VORTAC SYA 109.0 Chan 27	APCH CRS 092°	Rwy Idg 10,004 TDZE 98 Arpt Elev 98
--	-------------------------	--

AL-1246 [USAF]

EARECKSON AS (PASY)

* When ALS inop, increase CAT AB vis to 1½ miles;
CAT CDE vis to 1¼ miles.
** Circling Not Authorized in area N of Rwy 10-28.

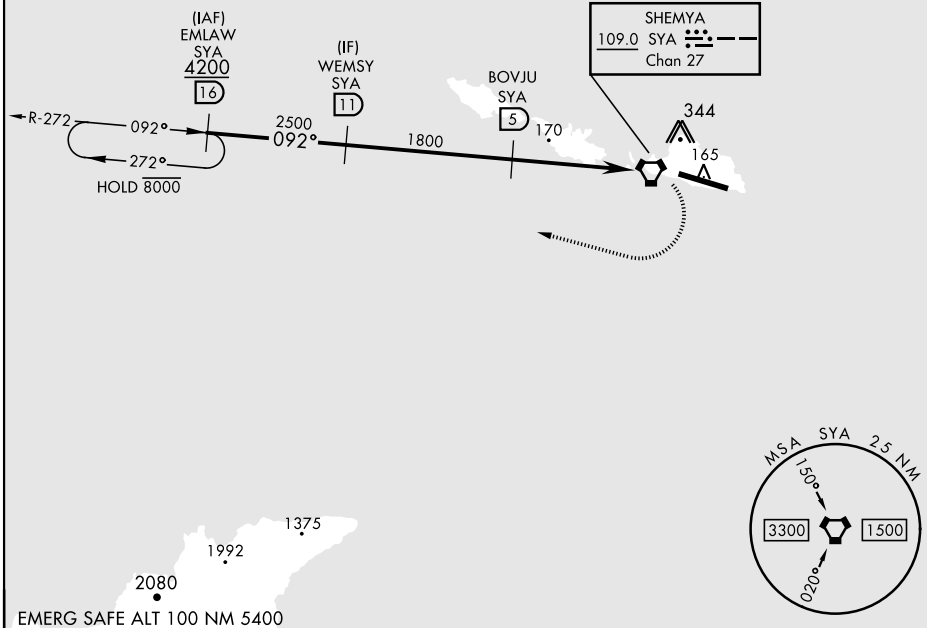


MISSED APPROACH: Climb to 1200, then climbing right turn to 4200, intercept SYA R-272 direct EMLAW and hold.

ANCHORAGE CENTER
119.1 339.8

CTAF
127.2 352.05 0

CAUTION: Numerous obstructions in area N of Rwy 10-28.
Missed approach requires use of RNAV or ATC RADAR monitoring.



WEMS (11) 2500		BOVJU (5) 1800		VORTAC		ELEV 98	TDZE 98
↑ 1200		↘ 4200		EMLAW R-272 (16)			
2.56°		TCH 42		4.9 NM		1.2 NM	
CATEGORY	A	B	C	D	E		
S-10 *	640-1	542 (600-1)	640-1½	542 (600-1½)			
CIRCLING **	640-1½	542 (600-1½)	640-1¾	542 (600-1¾)	680-2	HIRL Rwy 10-28 REIL Rwy 10 and 28	

SHEMYA I, ALEUTIAN I, ALASKA

52°43'N-174°07'E

EARECKSON AS (PASY)

Amdt 6 02DEC21

VOR/DME or TACAN RWY 10

AK, 11 JUL 2024 to 05 SEP 2024

AK, 11 JUL 2024 to 05 SEP 2024